

Table 1: Employment Status of Civilians Aged 16 years and older by Census Year									
						Change	% Change	Change	% Change
Employment Status		1980	1990	2000	2005-06	1980-2006	1980-2006	2000-2006	2000 to 2006
Total Persons 16 years +	N	169,210,580	189,695,860	216,041,449	231,849,426	62,638,846	37.0%	15,807,977	7.3%
Employed	N	97,349,960	115,469,350	129,716,648	139,598,491	42,248,531	43.4%	9,881,843	7.6%
	%	57.5%	60.9%	60.0%	60.2%				
Unemployed	N	6,762,280	7,766,385	7,962,061	10,005,434	3,243,154	48.0%	2,043,373	25.7%
	%	4.0%	4.1%	3.7%	4.3%				
Not in Labor Force	N	65,098,340	66,460,125	78,362,740	82,245,501	17,147,161	26.3%	3,882,761	5.0%
	%	38.5%	35.0%	36.3%	35.5%				
Labor Force Participation Rate	%	61.5%	65.0%	63.7%	64.5%				
Table 2: Full and Part Time Status by Year									
Full/Part Time Status		1980	1990	2000	2005-06				
Total Employed	N	93,906,960	111,809,902	125,776,067	139,274,458				
Full Time	N	76,993,080	90,996,817	102,554,858	111,713,524				
	%	82.0%	81.4%	81.5%	80.2%				
Part Time	N	16,913,880	20,813,085	23,221,209	27,560,934				
	%	18.0%	18.6%	18.5%	19.8%				

Table 3: Selected Characteristics of Persons Employed Full Time by Census Year						N/%	N/%	Share of
						Change	Change	1980-2006
Social/Demographic Characteristic		1980	1990	2000	2005-06	1980 to 2006	2000 to 2006	Increase
Total Employed Full Time	N	76,993,080	90,996,817	102,554,858	111,713,526	34,720,446	9,158,668	
			14,003,737	11,558,041	9,158,668	45.1%	8.9%	
Subtotal East		16,649,900	18,983,445	19,489,812	20,653,821	4,003,921	1,164,009	11.5%
		21.6%	20.9%	19.0%	18.5%	24.0%	6.0%	
New England Division	N	4,359,120	5,100,327	5,324,166	5,522,729	1,163,609	198,563	3.4%
	%	5.7%	5.6%	5.2%	4.9%	26.7%	3.7%	
Middle Atlantic Division	N	12,290,780	13,883,118	14,165,646	15,131,092	2,840,312	965,446	8.2%
	%	16.0%	15.3%	13.8%	13.5%	23.1%	6.8%	
Subtotal Midwest		19,974,280	21,590,343	24,287,525	24,929,512	4,955,232	641,987	14.3%
		25.9%	23.7%	23.7%	22.3%	24.8%	2.6%	
East North Central Div.	N	14,053,840	15,121,965	16,846,339	17,066,587	3,012,747	220,248	8.7%
	%	18.3%	16.6%	16.4%	15.3%	21.4%	1.3%	
West North Central Div.	N	5,920,440	6,468,378	7,441,186	7,862,925	1,942,485	421,739	5.6%
	%	7.7%	7.1%	7.3%	7.0%	32.8%	5.7%	
Subtotal South		25,533,480	31,220,969	36,697,884	40,711,965	15,178,485	4,014,081	43.7%
		33.2%	34.3%	35.8%	36.4%	59.4%	10.9%	
South Atlantic Division	N	12,701,800	16,627,012	19,403,591	21,737,622	9,035,822	2,334,031	26.0%
	%	16.5%	18.3%	18.9%	19.5%	71.1%	12.0%	
East South Central Div.	N	4,662,940	5,283,422	6,096,062	6,396,206	1,733,266	300,144	5.0%
	%	6.1%	5.8%	5.9%	5.7%	37.2%	4.9%	
West South Central Div.	N	8,168,740	9,310,535	11,198,231	12,578,137	4,409,397	1,379,906	12.7%
	%	10.6%	10.2%	10.9%	11.3%	54.0%	12.3%	
Subtotal West		14,835,420	19,202,060	22,079,637	25,418,228	10,582,808	3,338,591	30.5%
		19.3%	21.1%	21.5%	22.8%	71.3%	15.1%	
Mountain Division	N	3,876,560	4,827,890	6,612,160	7,854,356	3,977,796	1,242,196	11.5%
	%	5.0%	5.3%	6.4%	7.0%	102.6%	18.8%	
Pacific Division	N	10,958,860	14,374,170	15,467,477	17,563,872	6,605,012	2,096,395	19.0%
	%	14.2%	15.8%	15.1%	15.7%	60.3%	13.6%	
Panel B: Sex								
Male	N	48,580,800	53,995,131	59,367,870	64,917,285	16,336,485	5,549,415	
	%	63.1%	59.3%	57.9%	58.1%	33.6%	9.3%	
Female	N	28,412,280	37,001,686	43,186,988	46,796,240	18,383,960	3,609,252	
	%	36.9%	40.7%	42.1%	41.9%	64.7%	8.4%	
Total males and females		76,993,080	90,996,817	102,554,858	111,713,525	34,720,445	9,158,667	
						45.1%	8.9%	
Panel C: Race/Ethnic/Gender Subgroup								
White, Male	N	41,009,440	43,375,178	44,474,468	45,067,878	4,058,438	593,410	11.7%
	%	53.3%	47.7%	43.4%	40.3%	9.9%	1.3%	
White, Female	N	22,815,680	28,525,209	31,173,416	31,895,690	9,080,010	722,274	26.2%
	%	29.6%	31.3%	30.4%	28.6%	39.8%	2.3%	
Subtotal Whites		82.9%	79.0%	73.8%	68.9%	13,138,448	1,315,684	37.8%
Black, Male	N	3,793,080	4,360,140	4,864,166	5,722,287	1,929,207	858,121	5.6%
	%	4.9%	4.8%	4.7%	5.1%	50.9%	17.6%	
Black, Female	N	3,343,680	4,479,617	5,401,459	6,171,889	2,828,209	770,430	8.1%
	%	4.3%	4.9%	5.3%	5.5%	84.6%	14.3%	
Subtotal Blacks		9.3%	9.7%	10.0%	10.6%	4,757,416	1,628,551	13.7%
Latino Male	N	2,782,380	4,469,207	6,600,997	10,060,865	7,278,485	3,459,868	21.0%
	%	3.6%	4.9%	6.4%	9.0%	261.6%	52.4%	
Latina Female	N	1,534,180	2,609,859	3,951,943	5,539,898	4,005,718	1,587,955	11.5%
	%	2.0%	2.9%	3.9%	5.0%	261.1%	40.2%	
Subtotal Latinos		5.6%	7.8%	10.3%	14.0%	11,284,203	5,047,823	32.5%
Asian Male	N	730,540	1,460,726	2,178,637	2,996,901	2,266,361	818,264	6.5%
	%	.9%	1.6%	2.1%	2.7%	310.2%	37.6%	
Asian Female	N	548,060	1,136,040	1,706,724	2,290,006	1,741,946	583,282	5.0%
	%	.7%	1.2%	1.7%	2.0%	317.8%	34.2%	
Subtotal Asian		1.7%	2.9%	3.8%	4.7%	4,008,307	1,401,546	11.5%
Other Male	N	265,360	329,880	1,249,602	1,069,354	803,994	(180,248)	2.3%
	%	.3%	.4%	1.2%	1.0%	303.0%	-14.4%	
Other Female	N	170,680	250,961	953,446	898,757	728,077	(54,689)	2.1%
	%	.2%	.3%	.9%	.8%	426.6%	-5.7%	
Subtotal Others		.6%	.6%	2.1%	1.8%	1,532,071	(234,937)	4.4%

						N/% Change	N/% Change	Share of 1980-2006 Increase
Social/Demographic Characteristic		1980	1990	2000	2005-06	1980 to 2006	2000 to 2006	
Panel D: Age Group								
24 years of less		13,184,680	10,129,497	9,837,728	10,473,658			
		17.1%	11.1%	9.6%	9.4%			
25-29 yrs	N	12,014,360	13,630,930	12,037,751	12,720,237			
	%	15.6%	15.0%	11.7%	11.4%			
30-34 yrs	N	10,996,800	14,460,000	13,050,804	12,989,237			
	%	14.3%	15.9%	12.7%	11.6%			
Subtotal 34 year or less		47.0%	42.0%	34.1%	32.4%			
35-44 yrs	N	16,141,980	25,492,957	29,985,318	29,415,216			
	%	21.0%	28.0%	29.2%	26.3%			
45-54 yrs	N	13,652,020	16,700,745	24,866,190	28,554,051			
	%	17.7%	18.4%	24.2%	25.6%			
55-64 yrs	N	9,544,960	8,921,248	10,860,317	15,002,558			
	%	12.4%	9.8%	10.6%	13.4%			
65 yrs +	N	1,458,280	1,661,440	1,916,750	2,558,569			
	%	1.9%	1.8%	1.9%	2.3%			
Panel E: Educational Attainment 1980 to 2006)								
Less than HSD	N	16530100	13345634	12267322	11671552			
	%	21.5%	14.7%	12.0%	10.4%			
High School Grad	N	30277300	27505064	27905173	31937569			
	%	39.3%	30.2%	27.2%	28.6%			
Subtotal High School or less		60.8%	44.9%	39.2%	39.0%			
Some College	N	14727580	27065264	32147650	33263471			
	%	19.1%	29.7%	31.3%	29.8%			
BA or higher	N	15458100	23080855	30234713	34840933			
	%	20.1%	25.4%	29.5%	31.2%			
Panel F: Educational Attainment (1990 to 2006)								
Less than HSD	N	-	13345634	12267322	11671552			
	%	-	14.7%	12.0%	10.4%			
HS Diploma	N	-	27505064	27905173	31937569			
	%	-	30.2%	27.2%	28.6%			
Some College	N	-	27065264	32147650	33263471			
	%	-	29.7%	31.3%	29.8%			
BA	N	-	14942065	19429525	22308684			
	%	-	16.4%	18.9%	20.0%			
MA	N	-	5258447	7157726	8539125			
	%	-	5.8%	7.0%	7.6%			
PhD/Professional	N	-	2880343	3647462	3993124			
	%	-	3.2%	3.6%	3.6%			
Panel G: Born in US includes persons born abroad of US Citizen parents								
US Born	N	71,836,400	82,494,031	89,579,267	93,492,751	21,656,351		
	%	93.3%	90.7%	87.3%	83.7%	30.1%		
Foreign Born	N	5,156,680	8,502,786	12,975,591	18,220,773	13,064,093		
	%	6.7%	9.3%	12.7%	16.3%	253.3%		
Panel H: Persons who speak more than English Only								
Total Employed Full Time		8,016,640	11,758,083	16,900,331	22,453,682			
Speaks Eng Very Well	N	4,681,380	6,751,412	9,629,422	11,962,254			
	%	58.4%	57.4%	57.0%	53.3%			
Speaks English Well	N	2,002,860	2,714,475	3,687,454	4,767,227			
	%	25.0%	23.1%	21.8%	21.2%			
Speaks English but not well	N	995,360	1,754,610	2,626,040	3,965,648			
	%	12.4%	14.9%	15.5%	17.7%			
Does not speak English	N	337,040	537,586	957,415	1,758,553			
	%	4.2%	4.6%	5.7%	7.8%			
Subtotal Not Well or Not at all		16.6%	19.5%	21.2%	25.5%			
Class of worker								
Self-employed, not incorporated	N	5134260	5870914	6038768	6562878			
	%	6.7%	6.5%	5.9%	5.9%			
Self-employed, incorporated	N	1821960	2639843	3432903	4286920			
	%	2.4%	2.9%	3.3%	3.8%			
Wage/salary, private	N	56572580	62377928	70600998	76170367			
	%	73.5%	68.5%	68.8%	68.2%			
Wage/salary at non-profit	N	0	5578705	6822927	7551006			
	%	.0%	6.1%	6.7%	6.8%			
Federal govt employee	N	3285340	3530895	3152259	3344628			
	%	4.3%	3.9%	3.1%	3.0%			
State govt employee	N	3600460	4406302	5068613	4882734			
	%	4.7%	4.8%	4.9%	4.4%			
Local govt employee	N	6578480	6592230	7438390	8914993			
	%	8.5%	7.2%	7.3%	8.0%			

						N/% Change	N/% Change	Share of 1980-2006 Increase	
Social/Demographic Characteristic		1980	1990	2000	2005-06	1980 to 2006	2000 to 2006		
Industrial Sector									
Agriculture, Forestry, Fishing and	N			1440115	1565220				
	%			1.4%	1.4%				
Mining	N			467608	572138				
	%			.5%	.5%				
Utilities	N			1120019	1095658				
	%			1.1%	1.0%				
Construction	N			7725373	9710774				
	%			7.5%	8.7%				
Manufacturing	N			16893634	15412366				
	%			16.5%	13.8%				
Wholesale	N			4118533	4383164				
	%			4.0%	3.9%				
Retail Trade	N			10413043	11264199				
	%			10.2%	10.1%				
Transportation and Warehousing	N			4788790	5103911				
	%			4.7%	4.6%				
Information and Communications	N			3346520	2924457				
	%			3.3%	2.6%				
Finance, Insurance, Real Estate a	N			7539117	8664610				
	%			7.4%	7.8%				
Professional, Scientific, Managem	N			9729035	11398667				
	%			9.5%	10.2%				
Educational, Health and Social Se	N			18949485	21854639				
	%			18.5%	19.6%				
Arts, Entertainment, Recreation,Ac	N			5988832	6953550				
	%			5.8%	6.2%				
Other Services	N			4422708	4652435				
	%			4.3%	4.2%				
Public Administration	N			5612046	6157740				
	%			5.5%	5.5%				

						N/% Change	N/% Change	Share of 1980-2006 Increase	
Social/Demographic Characteristic		1980	1990	2000	2005-06	1980 to 2006	2000 to 2006		
Occupational Group									
Management Occupations	N			10826755	12059905				
	%			10.6%	10.8%				
Business and Financial Operations	N			4886102	5270373				
	%			4.8%	4.7%				
Computer and Mathematical Occupations	N			2894557	2997185				
	%			2.8%	2.7%				
Architecture and Engineering Occupations	N			2499537	2547106				
	%			2.4%	2.3%				
Life, Physical and Social Sciences	N			1028737	1117711				
	%			1.0%	1.0%				
Community and Social Services Occupations	N			1601481	1815153				
	%			1.6%	1.6%				
Legal Occupations	N			1250952	1403320				
	%			1.2%	1.3%				
Education, Training, and Library Occupations	N			5373585	5944154				
	%			5.2%	5.3%				
Arts, Design, Entertainment, Sports, and Recreation Occupations	N			1801717	1864816				
	%			1.8%	1.7%				
Healthcare Practitioners and Technical Occupations	N			4616238	5363395				
	%			4.5%	4.8%				
Healthcare Support Occupations	N			1749507	2071306				
	%			1.7%	1.9%				
Protective Service Occupations	N			2237582	2549824				
	%			2.2%	2.3%				
Food Preparation and Serving Occupations	N			3172132	3774541				
	%			3.1%	3.4%				
Building and Grounds Cleaning and Maintenance Occupations	N			2918991	3759334				
	%			2.8%	3.4%				
Personal Care and Service Occupations	N			2088712	2615338				
	%			2.0%	2.3%				
Sales Occupations	N			10387665	11659799				
	%			10.1%	10.4%				
Office and Administrative Support Occupations	N			15286719	15599133				
	%			14.9%	14.0%				
Farming, Fishing, and Forestry Occupations	N			697019	797817				
	%			.7%	.7%				
Construction and Extraction Trades Occupations	N			6330256	8061339				
	%			6.2%	7.2%				
Installation, Maintenance, and Repairs Occupations	N			4670733	4613391				
	%			4.6%	4.1%				
Production Occupations	N			9840415	8749765				
	%			9.6%	7.8%				
Transportation and Material Moving Occupations	N			6395466	7078823				
	%			6.2%	6.3%				

Table 4: Hourly Rate and Low-Wage Cutoffs for Full Time Employed by Year:						
Separately for Sex and Race/Ethnic Gender Subgroups						
					2005-6	2005-6
					Weekly	Yearly
Hourly Rate/Definitions	1980	1990	2000	2005-6	Salary	Salary
Panel A: Full Time						
Mean Hourly Rate	\$19.98	\$20.88	\$22.91	\$23.20	\$928	\$48,252
Median Hourly Rate	\$16.69	\$16.46	\$17.02	\$17.10	\$684	\$35,568
\$9.83 - Poverty 2006 Threshold	18.9%	20.8%	18.9%	19.4%	\$393	\$20,446
\$10.96 - Bottom 25% of Full Time Wages	24.5%	24.7%	24.8%	24.7%	\$438	\$22,797
\$11.40 - 2/3 Median of Full Time Wages	24.9%	25.1%	25.2%	26.4%	\$456	\$23,712
Panel B: Part Time Workers						
Mean Hourly Rate	\$25.82	\$21.23	\$23.27	\$24.88	\$995	\$39,803
Median Hourly Rate	\$11.29	\$10.45	\$11.17	\$10.48	\$419	\$21,799
\$9.83 - Poverty 2006 Threshold	40.6%	46.0%	43.1%	45.7%		
\$10.96 - Bottom 25% of Full Time Wages	47.7%	51.0%	50.1%	52.8%		
\$11.40 - 2/3 Median of Full Time Wages	48.2%	52.3%	50.6%	54.4%		
Panel C: Median Hourly Wage Rate By Ethnic/Race/Sex by Year						
Race/Ethnic Gender Subgroup	1980	1990	2000	200506		
White, Male	\$21.11	\$20.06	\$20.17	\$20.44	-3.2%	
Black, Male	\$16.05	\$15.67	\$15.71	\$15.55	-3.1%	
Latino Male	\$15.65	\$13.58	\$12.80	\$12.46	-20.4%	
Asian Male	\$20.16	\$19.59	\$20.58	\$21.48	6.6%	
Other Male	\$16.71	\$15.05	\$16.28	\$15.94	-4.6%	
White, Female	\$13.10	\$14.14	\$15.51	\$16.36	24.9%	
Black, Female	\$12.30	\$13.56	\$14.31	\$14.24	15.7%	
Latina Female	\$11.13	\$11.75	\$11.63	\$11.53	3.6%	
Asian Female	\$13.91	\$15.14	\$16.75	\$17.63	26.8%	
Other Female	\$11.59	\$11.75	\$13.75	\$14.19	22.4%	
Total	\$16.69	\$16.46	\$17.02	\$17.10	2.5%	

Table 5: Percent of Low Wage Workers in Selected Categories and Category as Percent of Low Wage Workers By Year								
	Panel A				Panel B			
	Percent of Category in Low-Wage Job				Percent of Category			
Characteristic	1980	1990	2000	2005-06	1980	1990	2000	2005-06
Total Employed Full Time	24.9%	25.1%	25.2%	26.4%	18,931,020	22,699,744	25,691,051	29,402,220
Sex								
1 Male	17.2%	20.1%	21.2%	23.5%	43.7%	47.4%	48.7%	51.7%
2 Female	37.9%	32.4%	30.6%	30.4%	56.3%	52.6%	51.3%	48.3%
Race/Ethnicity and Gender								
1 White, Male	15.5%	17.5%	17.3%	18.3%	33.2%	33.2%	29.8%	27.9%
2 White, Female	36.7%	30.9%	27.9%	26.5%	43.9%	38.7%	33.7%	28.6%
3 Black, Male	27.3%	27.8%	27.9%	30.2%	5.4%	5.3%	5.3%	5.9%
4 Black, Female	41.2%	34.9%	34.3%	35.1%	7.2%	6.9%	7.2%	7.4%
5 Latino Male	27.9%	36.3%	40.9%	43.5%	4.0%	7.1%	10.5%	14.9%
6 Latina Female	49.2%	45.0%	47.1%	48.4%	3.9%	5.2%	7.2%	9.1%
7 Asian Male	18.1%	20.8%	20.7%	20.3%	.7%	1.3%	1.8%	2.1%
8 Asian Female	32.3%	29.0%	27.4%	26.7%	.9%	1.4%	1.8%	2.1%
9 Other Male	26.1%	31.2%	28.1%	29.7%	.4%	.4%	1.4%	1.1%
10 Other Female	46.6%	43.4%	36.7%	35.7%	.4%	.5%	1.4%	1.1%
Age Group								
0 16-17 yrs	82.2%	83.6%	81.4%	84.2%	1.6%	.8%	.7%	.6%
1 18-24 yrs	46.4%	55.5%	58.0%	62.4%	31.1%	24.2%	21.7%	21.7%
2 25-29 yrs	23.2%	27.9%	28.9%	32.4%	14.6%	16.7%	13.5%	14.0%
3 30-34 yrs	18.5%	21.8%	23.2%	24.7%	10.7%	13.8%	11.7%	10.9%
4 35-44 yrs	18.5%	18.4%	20.3%	21.3%	15.6%	20.5%	23.6%	21.3%
5 45-54 yrs	19.0%	18.4%	18.1%	19.3%	13.5%	13.5%	17.5%	18.7%
6 55-64 yrs	20.3%	20.8%	20.5%	19.7%	10.1%	8.1%	8.6%	10.0%
7 65 yrs +	37.8%	35.4%	36.8%	32.7%	2.8%	2.5%	2.7%	2.8%
Census region and division								
11 New England	23.2%	15.0%	17.7%	17.8%	5.3%	3.4%	3.6%	3.3%
12 Middle Atlantic	20.4%	18.5%	20.6%	21.8%	13.2%	11.3%	11.3%	11.2%
21 East North Central	19.8%	23.4%	22.4%	23.9%	14.6%	15.5%	14.7%	13.8%
22 West North Central	28.0%	30.3%	27.1%	27.5%	8.6%	8.5%	7.8%	7.3%
31 South Atlantic	30.6%	27.6%	26.9%	27.7%	20.3%	20.1%	20.2%	20.4%
32 East South Central	33.8%	34.9%	32.0%	32.8%	8.2%	8.1%	7.6%	7.1%
33 West South Central	29.8%	32.7%	32.0%	34.4%	12.7%	13.3%	13.9%	14.7%
41 Mountain	26.7%	29.9%	27.4%	28.3%	5.4%	6.3%	7.0%	7.5%
42 Pacific	20.5%	21.5%	23.1%	24.7%	11.8%	13.6%	13.9%	14.7%
Place of Birth (Born Abroad included in Born in US)								
US born	24.6%	24.3%	23.6%	24.0%	92.2%	87.7%	82.0%	76.1%
Foreign Born	28.9%	32.9%	35.7%	38.7%	7.8%	12.3%	18.0%	23.9%
Citizenship								
1 US Born Citizen	24.6%	24.3%	23.6%	24.0%	92.2%	87.7%	82.0%	76.1%
2 Naturalized Citizen	22.1%	22.1%	23.7%	24.1%	2.9%	3.5%	5.2%	6.3%
3 Not a Citizen	35.4%	40.9%	45.1%	49.4%	4.9%	8.7%	12.8%	17.6%
English Speaking Ability								
0 Speaks only English	24.2%	23.9%	23.1%	23.3%	87.4%	82.8%	76.6%	70.5%
1 Speaks Eng Very Well	25.1%	26.0%	26.8%	27.0%	6.1%	7.7%	10.0%	11.0%
2 Speaks English Well	30.7%	33.7%	36.2%	38.7%	3.2%	4.0%	5.2%	6.3%
3 Speaks English but not well	43.2%	50.2%	54.6%	58.6%	2.2%	3.9%	5.6%	7.9%
4 Does not speak English	60.4%	69.2%	71.4%	73.4%	1.0%	1.6%	2.7%	4.4%
Years in US								
1 0-5 years	43.2%	51.5%	50.7%	56.8%	29.6%	28.0%	26.1%	25.3%
2 6-10 years	32.9%	40.2%	42.6%	46.0%	21.7%	24.2%	20.1%	21.1%
3 11-15 years	26.7%	31.2%	37.5%	39.8%	15.6%	15.2%	17.1%	15.0%
4 16-20 years	25.3%	28.2%	32.7%	36.2%	11.5%	11.9%	13.6%	13.9%
5 21+ years	20.1%	19.9%	23.0%	25.1%	21.7%	20.8%	23.2%	24.8%

Characteristic	Percent of Category in Low-Wage Job				Percent of Category			
	1980	1990	2000	2005-06	1980	1990	2000	2005-06
Educational Attainment (1980 to 2006)								
1 Less than HSD	36.9%	44.0%	50.2%	54.3%	31.6%	25.7%	23.9%	21.5%
2 High School Grad	27.4%	30.8%	33.0%	35.7%	43.4%	37.1%	35.7%	38.6%
Subtotal HSD or less					75.0%	62.8%	59.5%	60.1%
3 Some College	21.4%	23.1%	23.5%	24.9%	16.5%	27.4%	29.2%	28.1%
4 BA or higher	10.4%	9.7%	9.6%	10.0%	8.4%	9.8%	11.3%	11.8%
Class of Worker								
13 Self-employed, not incorporated	37.6%	40.7%	40.2%	40.4%	9.5%	9.8%	8.9%	8.6%
14 Self-employed, incorporated	18.1%	21.3%	22.4%	22.4%	1.7%	2.5%	3.0%	3.3%
22 Wage/salary, private	25.7%	26.6%	26.8%	28.6%	76.2%	72.9%	73.6%	74.1%
23 Wage/salary at non-profit	-	22.9%	21.3%	21.7%	-	5.6%	5.7%	5.6%
25 Federal govt employee	12.0%	10.2%	10.1%	10.1%	2.1%	1.6%	1.2%	1.1%
27 State govt employee	20.6%	16.2%	15.7%	15.9%	3.9%	3.1%	3.1%	2.6%
28 Local govt employee	19.0%	15.3%	15.8%	15.5%	6.6%	4.5%	4.6%	4.7%
Industry								
1 Agriculture, Forestry, Fishing and	-	-	55.1%	57.6%	6.8%	6.2%	2.9%	3.0%
2 Mining	-	-	15.0%	17.5%	.8%	.8%	.3%	.3%
3 Utilities	-	-	8.5%	8.7%	6.1%	7.7%	.4%	.3%
4 Construction	-	-	24.6%	28.3%			7.3%	9.3%
5 Manufacturing	-	-	20.9%	22.5%	24.8%	20.3%	13.7%	11.8%
6 Wholesale	-	-	21.8%	21.9%	3.3%	4.7%	3.5%	3.3%
7 Retail Trade	-	-	37.2%	39.0%	5.3%	5.6%	15.0%	14.9%
8 Transportation and Warehousing	-	-	19.6%	21.8%	6.0%	6.4%	3.6%	3.8%
9 Information and Communications	-	-	14.3%	14.2%	1.9%	2.2%	1.9%	1.4%
10 Finance, Insurance, Real Estate	-	-	17.5%	16.5%	8.5%	8.2%	5.1%	4.9%
11 Professional, Scientific, Manage	-	-	21.4%	22.2%	10.9%	12.0%	8.1%	8.6%
12 Educational, Health and Social S	-	-	23.6%	23.4%	18.4%	17.6%	17.4%	17.4%
13 Arts, Entertainment, Recreation,	-	-	51.2%	53.2%	1.1%	2.8%	11.9%	12.5%
14 Other Services	-	-	38.1%	40.5%	6.0%	5.5%	6.5%	6.4%
15 Public Administration	-	-	11.1%	10.7%			2.4%	2.2%
Occupation								
1 Management Occupations			12.4%	11.9%			5.2%	4.8%
2 Business and Financial Operations Specialists			9.3%	8.0%			1.8%	1.4%
3 Computer and Mathematical Occupations			4.8%	4.5%			.5%	.5%
4 Architecture and Engineering Occupations			5.3%	5.2%			.5%	.5%
5 Life, Physical and Social Science Occupations			10.2%	8.4%			.4%	.3%
6 Community and Social Services Occupations			19.0%	18.2%			1.2%	1.1%
7 Legal Occupations	-	-	8.1%	6.7%			.4%	.3%
8 Education, Training, and Library O	-	-	17.3%	17.5%			3.6%	3.5%
9 Arts, Design, Entertainment, Spo	-	-	19.9%	19.0%			1.4%	1.2%
10 Healthcare Practitioners and Tec	-	-	10.7%	10.2%			1.9%	1.9%
11 Healthcare Support Occupations	-	-	48.5%	47.6%			3.3%	3.3%
12 Protective Service Occupations	-	-	18.6%	19.4%			1.6%	1.7%
13 Food Preparation and Serving C	-	-	64.9%	66.8%			8.0%	8.6%
14 Building and Grounds Cleaning	-	-	52.0%	55.2%			5.9%	7.0%
15 Personal Care and Service Occ	-	-	56.9%	59.5%			4.5%	5.2%
16 Sales Occupations	-	-	30.0%	29.6%			12.0%	11.7%
17 Office and Administrative Suppo	-	-	27.4%	27.6%			16.3%	14.6%
18 Farming, Fishing, and Forestry O	-	-	65.3%	68.3%			1.8%	1.8%
19 Construction and Extraction Tra	-	-	26.1%	31.0%			6.4%	8.5%
20 Installation, Maintenance, and R	-	-	19.8%	21.0%			3.6%	3.3%
21 Production Occupations	-	-	30.2%	33.5%			11.5%	9.9%
22 Transportation and Material Mov	-	-	32.8%	36.7%			8.1%	8.8%

Table 6: Residence and Place of Work of Full Time Workers by Year				
Panel A: Residence				
Core Based Statistical Area (CBSA)		2000	2006	Change
Central City in Metropolitan CBSA	N	16,218,760	17,454,203	1,235,443
	%	15.8%	15.6%	7.6%
City as % of CBSA		19.1%	18.8%	
2 Outside city in Metropolitan CBSA	N	68,490,480	75,233,363	6,742,883
	%	66.8%	67.3%	9.8%
Subtotal Metropolitan		84,709,240	92,687,566	7,978,326
		82.6%	83.0%	9.4%
Metropolitan CBSA	N	9,170,792	9,622,960	452,168
	%	8.9%	8.6%	4.9%
Territory Outside CBSA	N	8,674,826	9,402,999	728,173
	%	8.5%	8.4%	8.4%
Total	N	102,554,858	111,713,525	9,158,667
	%	100.0%	100.0%	8.9%
Panel B: Place of Work				
		2000	2006	Change
1 Works in City in Metro	N	35,990,908	39,185,375	3,194,467
	%	35.1%	35.1%	8.9%
City as % of Metro Area		42.4%	42.7%	
2 Works outside city in Metro	N	48,862,941	52,676,339	3,813,398
	%	47.6%	47.2%	7.8%
Subtotal Metropolitan Area	N	84,853,849	91,861,714	7,007,865
	%	82.7%	82.2%	8.3%
3 Works in Micropolitan area	N	8,081,005	8,359,286	278,281
	%	7.9%	7.5%	3.4%
4 Works in non-CBSA territory	N	9,620,004	11,492,525	1,872,521
	%	9.4%	10.3%	19.5%
Total	N	102,554,858	111,713,525	9,158,667
	%	100.0%	100.0%	8.9%

Table 7: Difference In Low Wage Rate Using 2/3 Local Median Hourly Wage versus 2/3 National Median Hourly Wage (50 Largest CBSAs)											
CBSA	Low wage jobs based on 2/3 national median wage		Low wage jobs based on 2/3 local median wage		2006 Difference in Low Wage Rate Local Vs National	Total Jobs	Local Median Hourly Wage	2/3 Local median hourly wage	2/3 Local median weekly wage	2006 Difference 2/3 Local minus 2/3 national Median Wage	
	2000	2006	2000	2006							2,000
35620 New York-Northern New Jersey-Long Island, NY-PA-NJ-DE-MD	20.7%	23.7%	29.4%	32.9%	9.2%	8,006,098	8,483,627	\$ 21.42	\$14.28	\$571.33	\$115.33
31100 Los Angeles-Long Beach-Santa Ana, CA	28.4%	31.2%	31.3%	34.2%	3.1%	5,334,809	5,964,814	\$ 18.24	\$12.16	\$486.31	\$30.31
16980 Chicago-Naperville-Joliet, IL-IN-WI	22.7%	26.4%	29.5%	33.6%	7.2%	4,151,657	4,338,317	\$ 19.93	\$13.29	\$531.48	\$75.48
37980 Philadelphia-Camden-Wilmington, PA-NJ-DE-MD	21.9%	24.5%	29.1%	31.7%	7.2%	2,554,510	2,640,296	\$ 19.93	\$13.29	\$531.48	\$75.48
19100 Dallas-Fort Worth-Arlington, TX	27.2%	32.1%	27.0%	32.7%	0.6%	2,544,070	2,850,852	\$ 17.27	\$11.52	\$460.62	\$4.62
47900 Washington-Arlington-Alexandria, DC-VA-MD-WV	17.5%	18.0%	30.7%	29.8%	11.8%	2,507,384	2,742,763	\$ 23.27	\$15.51	\$620.51	\$164.51
14460 Boston-Cambridge-Quincy, MA-NH	18.6%	20.1%	29.6%	30.5%	10.5%	2,281,849	2,313,675	\$ 21.61	\$14.40	\$576.19	\$120.19
12060 Atlanta-Sandy Springs-Marietta, GA	24.2%	27.4%	27.0%	30.3%	2.9%	2,196,088	2,486,667	\$ 17.95	\$11.97	\$478.68	\$22.68
33100 Miami-Fort Lauderdale-Miami Beach, FL	31.1%	34.4%	27.2%	31.2%	-3.2%	2,157,672	2,472,161	\$ 15.72	\$10.48	\$419.27	(\$36.73)
26420 Houston-Baytown-Sugar Land, TX	28.8%	34.4%	28.0%	34.2%	-0.3%	2,087,049	2,441,494	\$ 16.95	\$11.30	\$452.13	(\$3.87)
41860 San Francisco-Oakland-Fremont, CA	17.9%	19.8%	30.4%	31.3%	11.5%	2,073,724	2,066,238	\$ 23.32	\$15.55	\$621.94	\$165.94
19820 Detroit-Warren-Livonia, MI	22.5%	25.8%	31.1%	34.2%	8.5%	2,039,369	1,964,883	\$ 20.54	\$13.69	\$547.60	\$91.60
33460 Minneapolis-St. Paul-Bloomington, MN-WI	19.4%	21.6%	28.4%	29.6%	8.0%	1,579,136	1,658,548	\$ 20.36	\$13.57	\$542.95	\$86.95
42660 Seattle-Tacoma-Bellevue, WA	20.7%	21.8%	29.0%	30.5%	8.6%	1,547,965	1,618,910	\$ 20.52	\$13.68	\$547.31	\$91.31
38060 Phoenix-Mesa-Scottsdale, AZ	28.2%	30.0%	27.2%	29.7%	-0.3%	1,482,146	1,820,075	\$ 16.87	\$11.25	\$449.87	(\$6.13)
19740 Denver-Aurora, CO	23.0%	25.4%	28.0%	30.3%	4.9%	1,326,404	1,392,236	\$ 18.91	\$12.60	\$504.17	\$48.17
41180 St. Louis, MO-IL	27.1%	28.4%	30.3%	31.2%	2.7%	1,257,871	1,294,426	\$ 18.03	\$12.02	\$480.90	\$24.90
41740 San Diego-Carlsbad-San Marcos, CA	27.5%	27.4%	31.9%	31.7%	4.3%	1,207,448	1,320,352	\$ 18.86	\$12.58	\$503.06	\$47.06
12580 Baltimore-Towson, MD	23.4%	23.9%	30.1%	29.2%	5.4%	1,141,317	1,221,884	\$ 19.31	\$12.88	\$515.03	\$59.03
40140 Riverside-San Bernardino-Ontario, CA	33.3%	35.6%	30.2%	33.6%	-2.0%	1,056,623	1,423,789	\$ 16.29	\$10.86	\$434.36	(\$21.64)
45300 Tampa-St. Petersburg-Clearwater, FL	32.3%	32.9%	28.2%	29.1%	-3.8%	1,051,390	1,184,968	\$ 15.72	\$10.48	\$419.22	(\$36.78)
38300 Pittsburgh, PA	31.3%	31.5%	31.4%	32.1%	0.7%	1,047,400	1,037,164	\$ 17.27	\$11.52	\$460.61	\$4.61
17460 Cleveland-Elyria-Mentor, OH	26.2%	29.0%	29.4%	32.2%	3.2%	1,046,599	1,030,194	\$ 18.12	\$12.08	\$483.28	\$27.28
38900 Portland-Vancouver-Beaverton, OR-WA	24.6%	28.2%	28.9%	31.8%	3.5%	964,457	1,031,155	\$ 18.34	\$12.23	\$489.09	\$33.09
41940 San Jose-Sunnyvale-Santa Clara, CA	16.2%	18.0%	32.8%	34.2%	16.2%	946,461	886,035	\$ 26.57	\$17.72	\$708.64	\$252.64
28140 Kansas City, MO-KS	26.3%	28.9%	29.1%	30.6%	1.7%	935,566	994,250	\$ 17.73	\$11.82	\$472.77	\$16.77
17140 Cincinnati-Middletown, OH-KY-IN	26.2%	28.6%	29.3%	30.6%	2.0%	866,002	887,453	\$ 17.94	\$11.96	\$478.33	\$22.33
18140 Columbus, OH	25.4%	27.6%	28.5%	30.0%	2.4%	840,607	862,757	\$ 17.94	\$11.96	\$478.33	\$22.33
36740 Orlando, FL	32.4%	34.1%	26.0%	27.8%	-6.3%	830,605	985,133	\$ 15.26	\$10.17	\$406.92	(\$49.08)
26900 Indianapolis, IN	25.4%	28.5%	25.8%	29.7%	1.2%	817,373	848,655	\$ 17.45	\$11.63	\$465.38	\$9.38
40900 Sacramento--Arden-Arcade--Roseville, CA	25.0%	26.0%	31.4%	32.9%	6.9%	798,741	924,556	\$ 19.75	\$13.17	\$526.70	\$70.70
33340 Milwaukee-Waukesha-West Allis, WI	24.0%	26.0%	29.7%	30.7%	4.7%	757,277	758,321	\$ 18.82	\$12.55	\$501.93	\$45.93
16740 Charlotte-Gastonia-Concord, NC-SC	25.5%	31.7%	24.7%	31.2%	-0.5%	737,047	818,977	\$ 16.81	\$11.21	\$448.32	(\$7.68)
41700 San Antonio, TX	37.2%	39.5%	28.0%	30.3%	-9.2%	731,252	832,098	\$ 14.54	\$9.70	\$387.82	(\$68.18)
12420 Austin-Round Rock, TX	28.3%	31.4%	28.0%	31.4%	0.0%	690,308	779,070	\$ 17.06	\$11.38	\$455.04	(\$0.96)
47260 Virginia Beach-Norfolk-Newport News, VA-NC	34.4%	32.0%	31.1%	29.0%	-3.0%	666,105	739,101	\$ 16.13	\$10.76	\$430.22	(\$25.78)
34980 Nashville-Davidson--Murfreesboro, TN	28.1%	29.7%	27.0%	29.0%	-0.7%	656,832	704,702	\$ 16.74	\$11.16	\$446.44	(\$9.56)
39300 Providence-New Bedford-Fall River, RI-MA	28.1%	27.3%	31.0%	30.1%	2.8%	656,133	687,749	\$ 18.03	\$12.02	\$480.90	\$24.90
29820 Las Vegas-Paradise, NV	26.3%	27.6%	24.4%	26.7%	-1.0%	635,283	846,921	\$ 16.50	\$11.00	\$440.00	(\$16.00)
35380 New Orleans-Metairie-Kenner, LA	34.7%	33.9%	30.9%	30.8%	-3.1%	599,237	553,748	\$ 15.72	\$10.48	\$419.22	(\$36.78)
25540 Hartford-West Hartford-East Hartford, CT	18.3%	20.6%	28.3%	30.3%	9.7%	589,248	605,944	\$ 21.43	\$14.29	\$571.52	\$115.52
27260 Jacksonville, FL	30.9%	31.2%	27.3%	28.4%	-2.8%	553,783	627,267	\$ 15.94	\$10.63	\$425.18	(\$30.82)
32820 Memphis, TN-MS-AR	28.6%	33.0%	26.0%	30.4%	-2.6%	550,561	578,218	\$ 16.29	\$10.86	\$434.36	(\$21.64)
31140 Louisville, KY-IN	30.1%	31.1%	27.3%	28.5%	-2.6%	542,148	544,348	\$ 16.29	\$10.86	\$434.36	(\$21.64)

	Low wage jobs based on 2/3 national median wage		Low wage jobs based on 2/3 local median wage		2006 Difference in Low Wage Rate Local Vs National	Total Jobs		Local Median Hourly Wage	2/3 Local median hourly wage	2/3 Local median weekly wage	2006 Difference 2/3 Local minus 2/3 national Median Wage
CBSA	2000	2006	2000	2006		2,000	2,006	2006	2006	2006	
36420 Oklahoma City, OK	36.9%	38.8%	29.8%	31.1%	-7.7%	537,475	572,358	\$ 14.89	\$9.93	\$397.13	(\$58.87)
15380 Buffalo-Niagara Falls, NY	30.6%	31.3%	31.0%	32.5%	1.2%	529,472	516,751	\$ 17.45	\$11.63	\$465.38	\$9.38
40060 Richmond, VA	25.5%	26.6%	27.9%	28.4%	1.7%	507,428	540,429	\$ 17.68	\$11.79	\$471.59	\$15.59
41620 Salt Lake City, UT	29.2%	32.6%	28.3%	32.2%	-0.5%	484,912	533,982	\$ 16.85	\$11.23	\$449.38	(\$6.62)
40380 Rochester, NY	27.5%	30.4%	31.4%	33.2%	2.8%	472,079	454,976	\$ 18.18	\$12.12	\$484.72	\$28.72
13820 Birmingham-Hoover, AL	28.8%	32.7%	26.6%	31.1%	-1.6%	456,550	483,766	\$ 16.39	\$10.93	\$437.11	(\$18.89)
46140 Tulsa, OK	35.3%	37.1%	28.3%	31.0%	-6.0%	446,241	451,399	\$ 15.09	\$10.06	\$402.45	(\$53.55)
14860 Bridgeport-Stamford-Norwalk, CT	16.9%	20.4%	30.1%	32.4%	12.0%	444,051	447,062	\$ 23.27	\$15.51	\$620.51	\$164.51

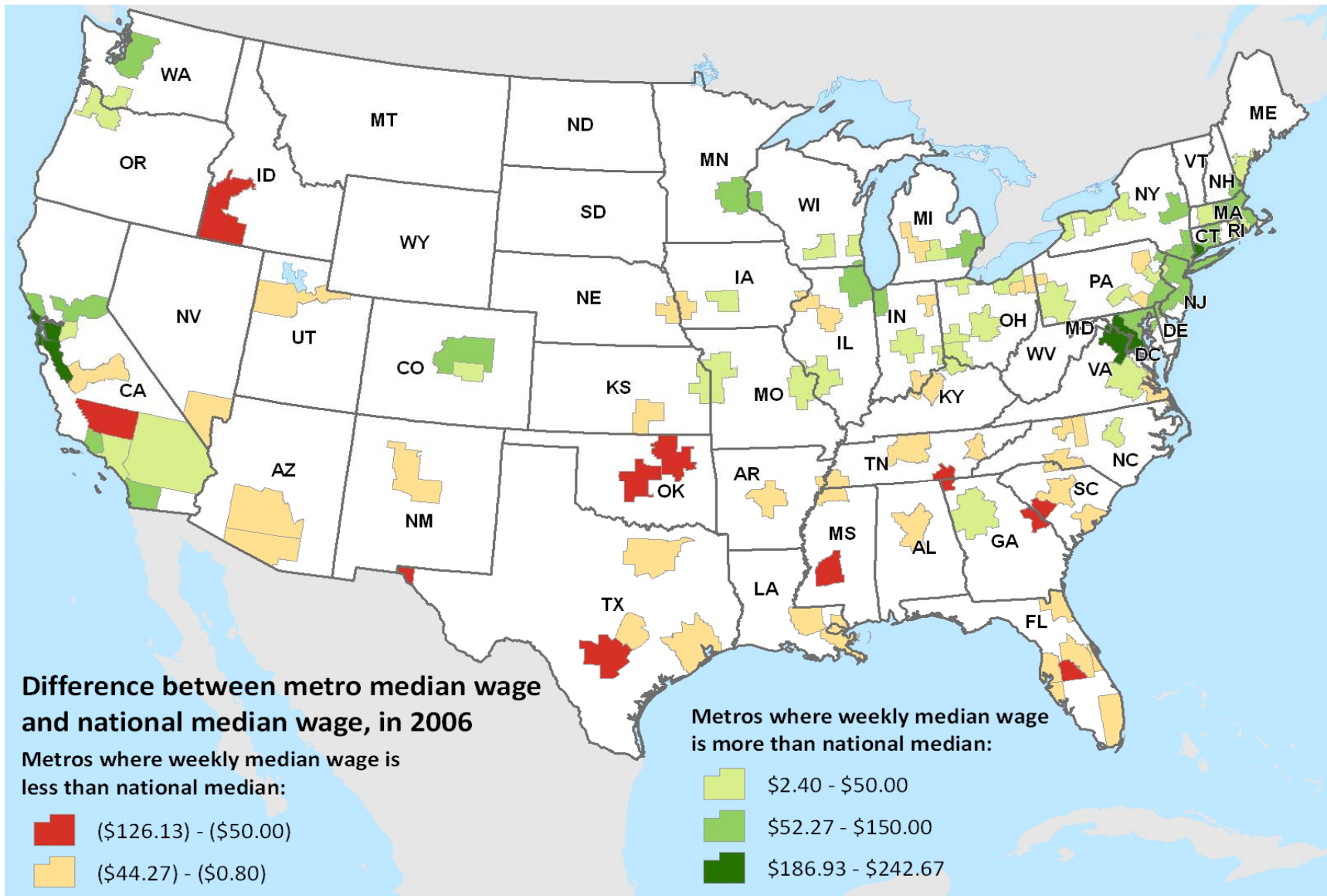


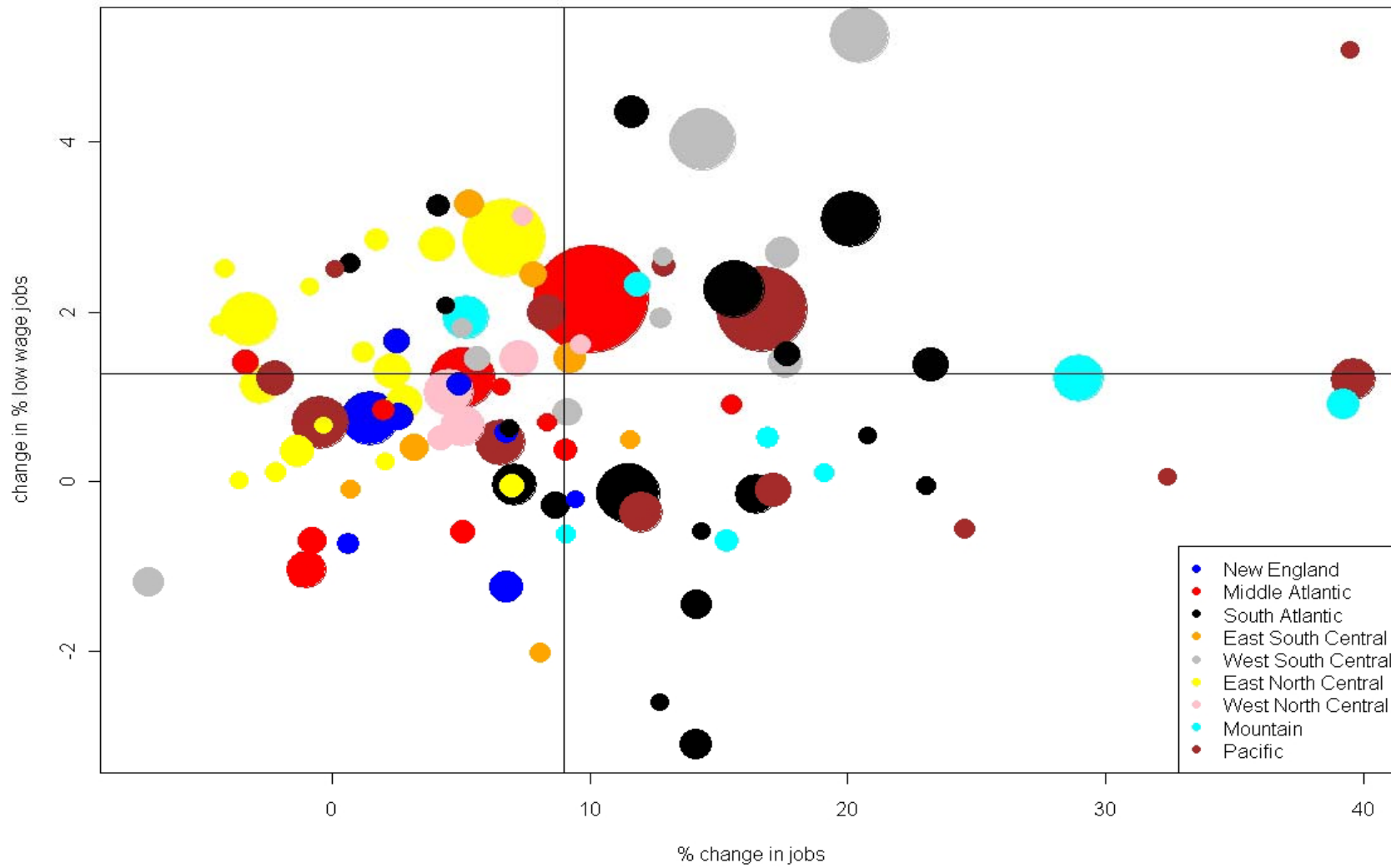
Table 7: Patterns of Job Growth and Low Wage Job Growth from 2000 to 2005 for 100 Largest Metropolitan CBSAs.

				Change in	% low wage	% low wage	Change in %
Type 1: Less job growth, less low wage growth		Jobs in 2000	Jobs in 2005-6	jobs	in 2000	in 2005-6	low wage
37980 Philadelphia-Camden-Wilmington, PA-NJ-DE	Middle Atlantic	2,095,354	2,201,742	5.1%	16.4%	17.6%	1.2%
14460 Boston-Cambridge-Quincy, MA-NH	New England	1,702,726	1,727,653	1.5%	13.8%	14.6%	0.7%
41860 San Francisco-Oakland-Fremont, CA	Pacific	1,627,022	1,620,169	-0.4%	14.5%	15.2%	0.7%
42660 Seattle-Tacoma-Bellevue, WA	Pacific	1,215,479	1,294,991	6.5%	16.1%	16.6%	0.5%
33460 Minneapolis-St. Paul-Bloomington, MN-WI	West North Central	1,208,403	1,263,292	4.5%	13.7%	14.7%	1.1%
41180 St. Louis, MO-IL	West North Central	991,104	1,041,429	5.1%	21.0%	21.7%	0.6%
12580 Baltimore-Towson, MD	South Atlantic	985,254	1,055,043	7.1%	17.7%	17.7%	0.0%
38300 Pittsburgh, PA	Middle Atlantic	806,951	798,934	-1.0%	24.6%	23.5%	-1.0%
17460 Cleveland-Elyria-Mentor, OH	East North Central	793,246	771,191	-2.8%	20.8%	22.0%	1.1%
41940 San Jose-Sunnyvale-Santa Clara, CA	Pacific	687,004	671,970	-2.2%	13.9%	15.1%	1.2%
18140 Columbus, OH	East North Central	645,640	663,558	2.8%	19.8%	20.8%	0.9%
33340 Milwaukee-Waukesha-West Allis, WI	East North Central	575,067	567,108	-1.4%	18.4%	18.7%	0.4%
39300 Providence-New Bedford-Fall River, RI-MA	New England	564,399	602,497	6.8%	20.9%	19.7%	-1.2%
35380 New Orleans-Metairie-Kenner, LA	West South Central	471,642	438,141	-7.1%	31.2%	30.0%	-1.2%
25540 Hartford-West Hartford-East Hartford, CT	New England	442,674	454,082	2.6%	13.3%	14.1%	0.8%
31140 Louisville, KY-IN	East South Central	425,733	439,364	3.2%	24.9%	25.4%	0.4%
40060 Richmond, VA	South Atlantic	404,059	439,030	8.7%	20.9%	20.7%	-0.3%
15380 Buffalo-Niagara Falls, NY	Middle Atlantic	399,554	396,489	-0.8%	22.6%	21.9%	-0.7%
36540 Omaha-Council Bluffs, NE-IA	West North Central	351,544	366,296	4.2%	25.0%	25.5%	0.5%
31540 Madison, WI	East North Central	317,896	340,052	7.0%	21.8%	21.7%	-0.1%
35300 New Haven-Milford, CT	New England	307,513	322,649	4.9%	14.8%	15.9%	1.2%
10580 Albany-Schenectady-Troy, NY	Middle Atlantic	306,023	321,579	5.1%	18.9%	18.3%	-0.6%
49340 Worcester, MA	New England	283,738	302,830	6.7%	15.2%	15.8%	0.6%
45060 Syracuse, NY	Middle Atlantic	262,744	268,009	2.0%	23.3%	24.2%	0.8%
44140 Springfield, MA	New England	250,439	252,069	0.7%	20.2%	19.5%	-0.7%
45780 Toledo, OH	East North Central	222,233	217,313	-2.2%	24.1%	24.2%	0.1%
28940 Knoxville, TN	East South Central	219,826	237,570	8.1%	29.4%	27.4%	-2.0%
42540 Scranton--Wilkes-Barre, PA	Middle Atlantic	217,670	214,870	-1.3%	29.1%	28.0%	-1.1%
16860 Chattanooga, TN-GA	East South Central	207,288	208,814	0.7%	29.6%	29.6%	-0.1%
25420 Harrisburg-Carlisle, PA	Middle Atlantic	200,990	217,837	8.4%	20.9%	21.6%	0.7%
12260 Augusta-Richmond County, GA-SC	South Atlantic	190,120	203,242	6.9%	32.0%	32.7%	0.6%
29540 Lancaster, PA	Middle Atlantic	178,253	189,950	6.6%	22.1%	23.2%	1.1%
19340 Davenport-Moline-Rock Island, IA-IL	East North Central	177,493	176,916	-0.3%	28.7%	29.4%	0.7%
37900 Peoria, IL	East North Central	170,131	173,625	2.1%	25.9%	26.1%	0.2%
29620 Lansing-East Lansing, MI	East North Central	169,004	162,924	-3.6%	21.6%	21.6%	0.0%

Type 2: More job growth, more low wage growth		Jobs in 2000	Jobs in 2005-6	Change in jobs	% low wage in 2000	% low wage in 2005-6	Change in % low wage
47900 Washington-Arlington-Alexandria, DC-VA-MD	South Atlantic	1,986,128	2,214,726	11.5%	14.8%	14.7%	-0.1%
38060 Phoenix-Mesa-Scottsdale, AZ	Mountain	1,222,577	1,577,108	29.0%	24.3%	25.5%	1.2%
40140 Riverside-San Bernardino-Ontario, CA	Pacific	980,864	1,369,511	39.6%	26.2%	27.4%	1.2%
41740 San Diego-Carlsbad-San Marcos, CA	Pacific	956,684	1,071,166	12.0%	23.2%	22.9%	-0.4%
45300 Tampa-St. Petersburg-Clearwater, FL	South Atlantic	867,327	1,010,082	16.5%	28.2%	28.0%	-0.2%
40900 Sacramento--Arden-Arcade--Roseville, CA	Pacific	634,520	743,124	17.1%	20.2%	20.1%	-0.1%
47260 Virginia Beach-Norfolk-Newport News, VA-NC	South Atlantic	536,884	612,811	14.1%	29.3%	26.2%	-3.1%
29820 Las Vegas-Paradise, NV	Mountain	532,771	741,689	39.2%	23.5%	24.4%	0.9%
27260 Jacksonville, FL	South Atlantic	464,699	530,427	14.1%	27.0%	25.6%	-1.4%
36420 Oklahoma City, OK	West South Central	436,356	476,320	9.2%	32.3%	33.1%	0.8%
10900 Allentown-Bethlehem-Easton, PA-NJ	Middle Atlantic	284,002	309,680	9.0%	20.5%	20.9%	0.4%
46060 Tucson, AZ	Mountain	282,436	325,590	15.3%	31.4%	30.7%	-0.7%
10740 Albuquerque, NM	Mountain	258,064	301,726	16.9%	29.1%	29.6%	0.5%
23420 Fresno, CA	Pacific	228,739	284,892	24.5%	33.3%	32.7%	-0.6%
39100 Poughkeepsie-Newburgh-Middletown, NY	Middle Atlantic	221,920	256,312	15.5%	17.6%	18.5%	0.9%
27140 Jackson, MS	East South Central	209,517	233,741	11.6%	31.7%	32.2%	0.5%
14260 Boise City-Nampa, ID	Mountain	203,591	242,455	19.1%	29.0%	29.1%	0.1%
17820 Colorado Springs, CO	Mountain	193,997	211,646	9.1%	25.6%	25.0%	-0.6%
42260 Sarasota-Bradenton-Venice, FL	South Atlantic	192,010	236,283	23.1%	29.1%	29.0%	-0.1%
44700 Stockton, CA	Pacific	170,664	225,953	32.4%	25.8%	25.8%	0.1%
38860 Portland-South Portland-Biddeford, ME	New England	169,720	185,728	9.4%	21.9%	21.7%	-0.2%
29460 Lakeland, FL	South Atlantic	168,089	202,982	20.8%	33.4%	34.0%	0.5%
37340 Palm Bay-Melbourne-Titusville, FL	South Atlantic	165,879	189,647	14.3%	28.1%	27.6%	-0.6%
16700 Charleston-North Charleston, SC	South Atlantic	165,300	186,269	12.7%	30.3%	27.7%	-2.6%
Type 3: Less job growth, more low wage growth		Jobs in 2000	Jobs in 2005-6	Change in jobs	% low wage in 2000	% low wage in 2005-6	Change in % low wage
16980 Chicago-Naperville-Joliet, IL-IN-WI	East North Central	3,340,294	3,564,003	6.7%	18.3%	21.1%	2.9%
19820 Detroit-Warren-Livonia, MI	East North Central	1,629,039	1,576,331	-3.2%	17.1%	19.0%	1.9%
19740 Denver-Aurora, CO	Mountain	1,072,082	1,127,865	5.2%	18.8%	20.7%	1.9%
38900 Portland-Vancouver-Beaverton, OR-WA	Pacific	750,050	812,495	8.3%	20.4%	22.4%	2.0%
28140 Kansas City, MO-KS	West North Central	745,485	799,601	7.3%	20.8%	22.3%	1.4%
17140 Cincinnati-Middletown, OH-KY-IN	East North Central	691,693	707,953	2.4%	20.0%	21.3%	1.3%
26900 Indianapolis, IN	East North Central	657,842	684,564	4.1%	20.4%	23.2%	2.8%
32820 Memphis, TN-MS-AR	East South Central	448,258	472,051	5.3%	24.9%	28.1%	3.3%
13820 Birmingham-Hoover, AL	East South Central	370,750	399,786	7.8%	25.2%	27.7%	2.4%
46140 Tulsa, OK	West South Central	354,320	374,215	5.6%	30.4%	31.8%	1.5%
40380 Rochester, NY	Middle Atlantic	348,850	337,112	-3.4%	21.1%	22.5%	1.4%
14860 Bridgeport-Stamford-Norwalk, CT	New England	338,477	346,940	2.5%	13.2%	14.9%	1.7%
17900 Columbia, SC	South Atlantic	280,160	291,732	4.1%	26.3%	29.6%	3.2%

Type 3: Less job growth, more low wage growth (continued)		Jobs in 2000	Jobs in 2005-6	Change in jobs	% low wage in 2000	% low wage in 2005-6	Change in % low wage
24340 Grand Rapids-Wyoming, MI	East North Central	275,444	280,210	1.7%	22.8%	25.7%	2.8%
10420 Akron, OH	East North Central	263,370	266,587	1.2%	22.3%	23.8%	1.5%
19380 Dayton, OH	East North Central	259,986	248,836	-4.3%	22.2%	24.1%	1.8%
30780 Little Rock-North Little Rock, AR	West South Central	230,499	242,103	5.0%	29.1%	30.9%	1.8%
24660 Greensboro-High Point, NC	South Atlantic	228,835	230,376	0.7%	25.4%	28.0%	2.6%
48620 Wichita, KS	West North Central	211,678	227,302	7.4%	24.7%	27.8%	3.1%
49660 Youngstown-Warren-Boardman, OH-PA	East North Central	202,776	194,406	-4.1%	27.8%	30.3%	2.5%
23060 Fort Wayne, IN	East North Central	182,971	181,405	-0.9%	22.0%	24.3%	2.3%
42220 Santa Rosa-Petaluma, CA	Pacific	170,565	170,761	0.1%	18.9%	21.4%	2.5%
49180 Winston-Salem, NC	South Atlantic	169,839	177,281	4.4%	26.0%	28.0%	2.1%
Type 4: Less job growth, more low wage growth		Jobs in 2000	Jobs in 2005-6	Change in jobs	% low wage in 2000	% low wage in 2005-6	Change in % low wage
35620 New York-Northern New Jersey-Long Island,	Middle Atlantic	6,485,990	7,140,540	10.1%	17.9%	20.0%	2.1%
31100 Los Angeles-Long Beach-Santa Ana, CA	Pacific	4,130,275	4,818,243	16.7%	26.3%	28.4%	2.0%
19100 Dallas-Fort Worth-Arlington, TX	West South Central	2,129,046	2,434,551	14.3%	23.9%	27.9%	4.0%
12060 Atlanta-Sandy Springs-Marietta, GA	South Atlantic	1,844,913	2,132,433	15.6%	20.7%	23.0%	2.3%
33100 Miami-Fort Lauderdale-Miami Beach, FL	South Atlantic	1,774,371	2,131,404	20.1%	28.2%	31.3%	3.1%
26420 Houston-Baytown-Sugar Land, TX	West South Central	1,765,982	2,127,382	20.5%	25.6%	30.8%	5.2%
36740 Orlando, FL	South Atlantic	651,899	803,252	23.2%	28.4%	29.8%	1.4%
41700 San Antonio, TX	West South Central	596,498	701,420	17.6%	33.4%	34.8%	1.4%
16740 Charlotte-Gastonia-Concord, NC-SC	South Atlantic	586,588	654,934	11.7%	22.0%	26.3%	4.3%
12420 Austin-Round Rock, TX	West South Central	557,441	654,814	17.5%	23.9%	26.6%	2.7%
34980 Nashville-Davidson--Murfreesboro, TN	East South Central	518,321	566,145	9.2%	23.4%	24.8%	1.4%
39580 Raleigh-Cary, NC	South Atlantic	349,404	411,059	17.6%	20.1%	21.6%	1.5%
41620 Salt Lake City, UT	Mountain	337,245	377,212	11.9%	24.7%	27.0%	2.3%
37100 Oxnard-Thousand Oaks-Ventura, CA	Pacific	272,255	307,217	12.8%	21.5%	24.1%	2.5%
12940 Baton Rouge, LA	West South Central	248,611	280,386	12.8%	29.7%	31.6%	1.9%
19780 Des Moines, IA	West North Central	214,394	235,020	9.6%	20.9%	22.5%	1.6%
21340 El Paso, TX	West South Central	190,373	214,831	12.8%	42.8%	45.5%	2.6%
12540 Bakersfield, CA	Pacific	179,208	250,001	39.5%	31.7%	36.8%	5.1%

Figure 2: Overall and low wage job growth by CBSA, 2000-2006



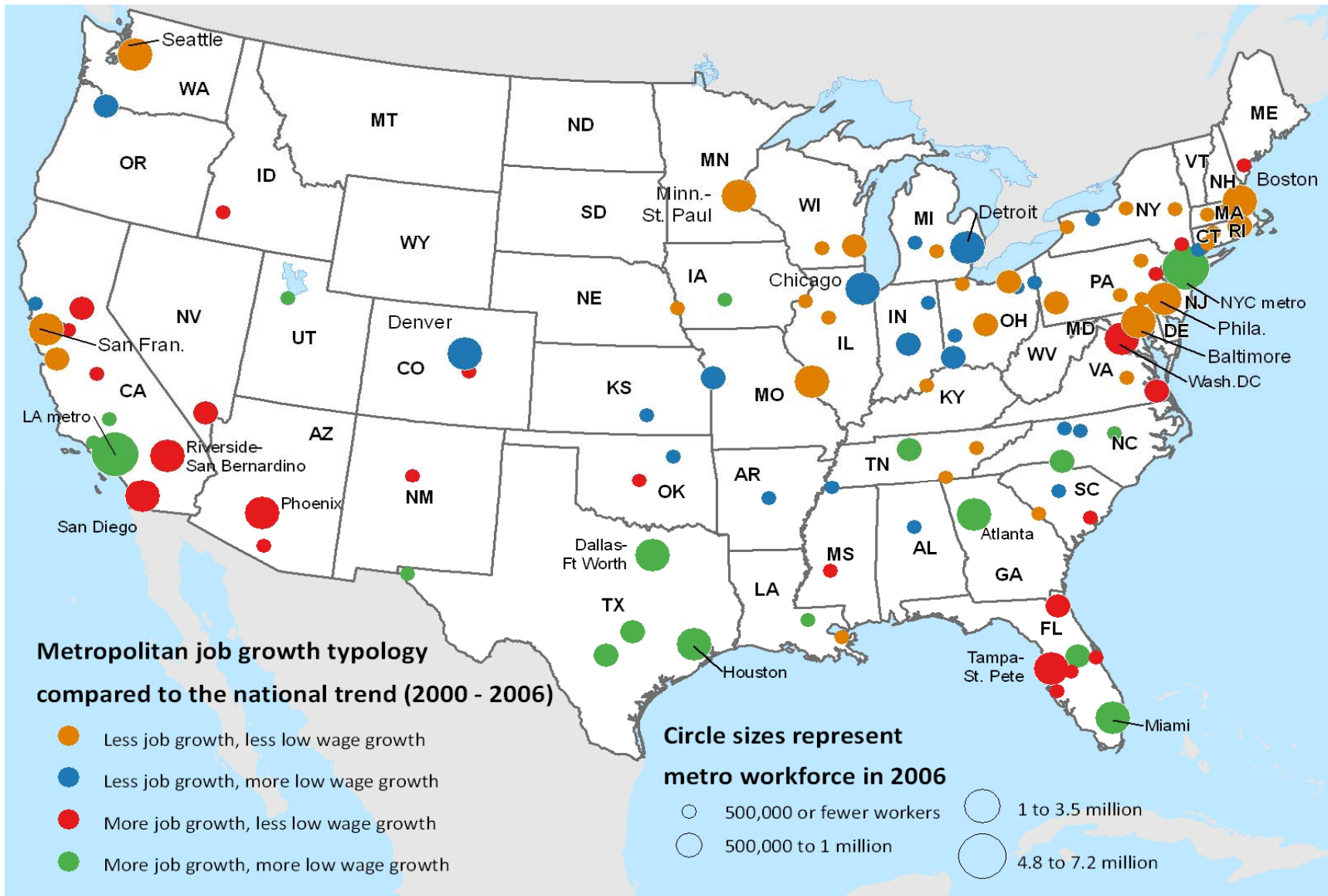
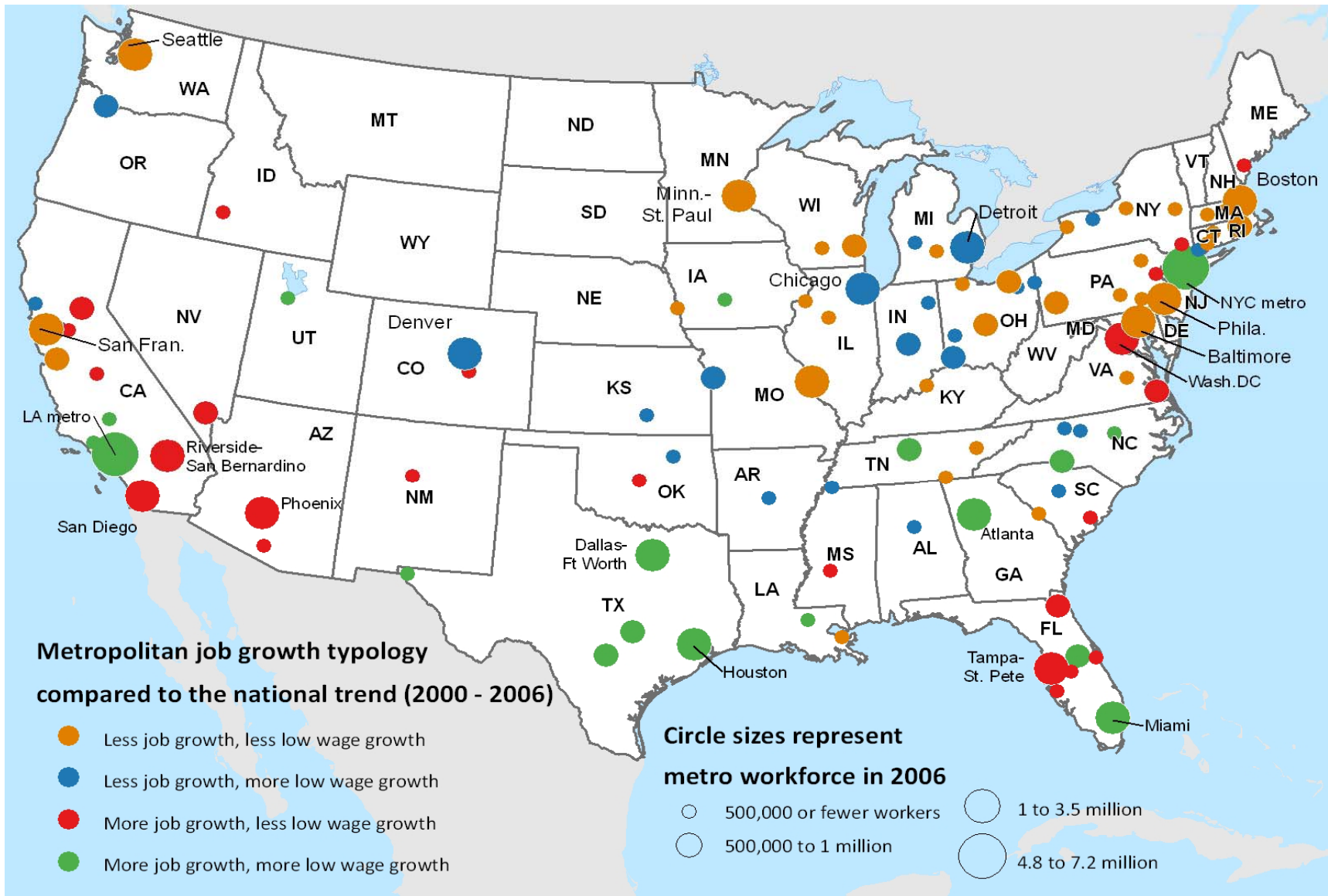


Table 9: Employment Change in Industry Sector and Occupational Category by Earnings Quartile Wage Quartile													
	Total			1st Quartile			2nd Quartile			3rd Quartile		4th Quartile	
	2006	% of All Jobs in 2006	Change 2000 to 2006	Upper \$9.93 2006	% of All Jobs in 2006	Change 2000 to 2006	Upper \$15.73 2006	Change 2000 to 2006	Upper \$25.61 2006	Change 2000 to 2006	Above \$25.61 2006	Change 2000 to 2006	
Total	111,313,966		9,234,891	27,519,833		2,167,821	27,996,441	2,449,341	27,897,504	2,339,297	27,900,188	2,278,432	
						23.5%		26.5%		25.3%		24.7%	
12 Educational, Health and Social Se	21,809,248	19.6%	2,917,376	4,728,801	17.2%	326,678	5,491,966	852,852	5,820,594	890,869	5,767,887	846,977	
Quartile Share of Change						11.2%		29.2%		30.5%		29.0%	
5 Manufacturing	15,389,624	13.8%	(1,474,733)	3,210,784	11.7%	(261,180)	4,014,541	(364,594)	4,076,266	(402,568)	4,088,033	(446,391)	
Quartile Share of Change						17.7%		24.7%		27.3%		30.3%	
11 Professional, Scientific, Managem	11,350,169	10.2%	1,679,467	2,367,124	8.6%	319,237	2,278,754	261,487	2,637,477	365,295	4,066,814	733,448	
Quartile Share of Change						19.0%		15.6%		21.8%		43.7%	
7 Retail Trade	11,214,502	10.1%	860,938	4,118,962	15.0%	308,203	3,294,498	380,165	2,231,048	198,704	1,569,994	(26,134)	
Quartile Share of Change						35.8%		44.2%		23.1%		-3.0%	
4 Construction	9,663,511	8.7%	1,986,976	2,573,895	9.4%	711,669	2,634,229	592,917	2,508,634	470,468	1,946,753	211,922	
Quartile Share of Change						35.8%		29.8%		23.7%		10.7%	
10 Finance, Insurance, Real Estate a	8,637,555	7.8%	1,125,265	1,305,697	4.7%	11,728	2,125,904	178,041	2,253,706	320,714	2,952,248	614,782	
Quartile Share of Change						1.0%		15.8%		28.5%		54.6%	
13 Arts, Entertainment, Recreation,A	6,923,087	6.2%	965,789	3,528,522	12.8%	507,706	1,781,377	264,134	1,012,286	148,693	600,902	45,256	
Quartile Share of Change						52.6%		27.3%		15.4%		4.7%	
15 Public Administration	6,153,182	5.5%	544,761	592,858	2.2%	(16,557)	1,406,341	79,703	2,009,347	206,006	2,144,636	275,609	
Quartile Share of Change						-3.0%		14.6%		37.8%		50.6%	
8 Transportation and Warehousing	5,088,345	4.6%	316,707	1,028,718	3.7%	108,351	1,280,643	140,164	1,740,332	102,924	1,038,652	(34,732)	
Quartile Share of Change						34.2%		44.3%		32.5%		-11.0%	
14 Other Services	4,612,326	4.1%	236,146	1,778,789	6.5%	127,631	1,275,951	60,336	967,597	48,525	589,989	(346)	
Quartile Share of Change						54.0%		25.6%		20.5%		-0.1%	
6 Wholesale	4,371,899	3.9%	264,707	885,715	3.2%	2,409	1,196,437	49,135	1,164,956	77,911	1,124,791	135,252	
Quartile Share of Change						0.9%		18.6%		29.4%		51.1%	
9 Information and Communications	2,916,538	2.6%	(422,146)	380,547	1.4%	(89,513)	580,251	(102,444)	793,307	(130,867)	1,162,433	(99,322)	
Quartile Share of Change						21.2%		24.3%		31.0%		23.5%	
1 Agriculture, Forestry, Fishing and H	1,517,634	1.4%	153,374	841,644	3.1%	95,958	326,229	34,369	188,945	11,077	160,816	11,970	
Quartile Share of Change						62.6%		22.4%		7.2%		7.8%	
3 Utilities	1,095,067	1.0%	(24,452)	86,446	0.3%	(6,929)	177,084	(6,167)	321,106	799	510,431	(12,155)	
Quartile Share of Change						28.3%		25.2%		-3.3%		49.7%	
2 Mining	571,279	0.5%	104,716	91,331	0.3%	22,430	132,236	29,243	171,903	30,747	175,809	22,296	
Quartile Share of Change						21.4%		27.9%		29.4%		21.3%	

Occupation by Quartile by Year												
	Total											
		% of All	Change	1st Quartile	% of All	Change	2nd Quartile	Change	3rd Quartile	Change	4th Quartile	Change
Occupation	2006	Jobs in 2006	2000 to 2006	Upper \$9.93	Jobs in 2006	2000 to 2006	Upper \$15.73	Change	Upper \$25.61	Change	Above \$25.61	Change
	2006	2006	2000 to 2006	2006	2006	2000 to 2006	2006	2000 to 2006	2006	2000 to 2006	2006	2000 to 2006
Total	111,313,974		9,234,899	27,519,836		2,167,824	27,996,443	2,449,343	27,897,506	2,339,299	27,900,189	2,278,433
						23.5%		26.5%		25.3%		24.7%
Management, Business and Financial Operat		15.5%			6.2%							
1 Management Occupations	11,975,284	10.8%	1,252,389	1,330,058	4.8%	16,521	1,822,323	101,884	2,952,646	327,810	5,870,257	806,174
Quartile Share of Change						1.3%		8.1%		26.2%		64.4%
2 Business and Financial Operations	5,257,508	4.7%	386,588	383,199	1.4%	(62,917)	997,488	(36,268)	1,743,842	156,322	2,132,979	329,451
Quartile Share of Change						-16.3%		-9.4%		40.4%		85.2%
Professional and Related		15.8%			7.3%							
3 Computer and Mathematical Occup	2,992,755	2.7%	102,691	124,295	0.5%	(12,873)	269,106	(32,732)	742,026	(13,450)	1,857,328	161,746
Quartile Share of Change						-12.5%		-31.9%		-13.1%		157.5%
4 Architecture and Engineering Occu	2,543,723	2.3%	48,321	121,410	0.4%	(9,816)	253,690	(26,277)	677,886	(11,325)	1,490,737	95,739
Quartile Share of Change						-20.3%		-54.4%		-23.4%		198.1%
5 Life, Physical and Social Science C	1,114,972	1.0%	88,750	86,668	0.3%	(15,690)	173,069	1,477	327,461	25,467	527,774	77,496
Quartile Share of Change						-17.7%		1.7%		28.7%		87.3%
6 Community and Social Services Oc	1,812,172	1.6%	213,958	299,131	1.1%	1,870	593,560	90,949	609,491	99,343	309,990	21,796
Quartile Share of Change						0.9%		42.5%		46.4%		10.2%
7 Legal Occupations	1,398,771	1.3%	155,072	86,194	0.3%	(12,277)	179,864	2,760	315,288	36,493	817,425	128,096
Quartile Share of Change						-7.9%		1.8%		23.5%		82.6%
8 Education, Training, and Library Oc	5,937,615	5.3%	572,819	967,187	3.5%	56,481	1,172,049	141,836	1,901,470	282,529	1,896,909	91,973
Quartile Share of Change						9.9%		24.8%		49.3%		16.1%
9 Arts, Design, Entertainment, Sports	1,842,518	1.7%	66,839	325,919	1.2%	(23,083)	408,749	13,531	528,264	43,723	579,586	32,668
Quartile Share of Change						-34.5%		20.2%		65.4%		48.9%
Service Occupations		18.0%			28.1%							
10 Healthcare Practitioners and Tech	5,355,809	4.8%	749,329	493,343	1.8%	8,553	913,503	86,804	1,512,395	114,375	2,436,568	539,597
Quartile Share of Change						1.1%		11.6%		15.3%		72.0%
11 Healthcare Support Occupations	2,066,776	1.9%	322,496	914,806	3.3%	78,809	763,769	181,575	298,517	62,735	89,684	(623)
Quartile Share of Change						24.4%		56.3%		19.5%		-0.2%
12 Protective Service Occupations	2,547,664	2.3%	312,116	455,567	1.7%	45,903	637,492	100,754	754,365	99,253	700,240	66,206
Quartile Share of Change						14.7%		32.3%		31.8%		21.2%
13 Food Preparation and Serving Oc	3,767,193	3.4%	602,768	2,417,727	8.8%	380,435	922,685	185,214	316,582	44,082	110,199	(6,963)
Quartile Share of Change						63.1%		30.7%		7.3%		-1.2%
14 Building and Grounds Cleaning ar	3,742,517	3.4%	840,767	1,966,320	7.1%	470,127	1,042,249	245,711	536,908	108,792	197,040	16,137
Quartile Share of Change						55.9%		29.2%		12.9%		1.9%
15 Personal Care and Service Occup	2,575,507	2.3%	532,215	1,479,324	5.4%	324,301	618,141	145,980	331,136	55,283	146,906	6,651
Quartile Share of Change						60.9%		27.4%		10.4%		1.2%
Sales and Office Occupations		24.4%			26.0%							
16 Sales Occupations	11,596,772	10.4%	1,282,195	3,247,872	11.8%	193,256	2,772,273	290,494	2,601,931	386,135	2,974,696	412,310
Quartile Share of Change						15.1%		22.7%		30.1%		32.2%
17 Office and Administrative Support	15,576,518	14.0%	315,550	3,899,597	14.2%	(220,424)	5,832,373	307,904	4,278,738	263,466	1,565,810	(35,396)
Quartile Share of Change						-69.9%		97.6%		83.5%		-11.2%
Construction and Maintenance		12.1%			13.7%							
18 Farming, Fishing, and Forestry Oc	794,936	0.7%	102,557	523,327	1.9%	74,641	169,100	25,209	66,125	3,139	36,384	(432)
Quartile Share of Change						72.8%		24.6%		3.1%		-0.4%
19 Construction and Extraction Trade	8,026,703	7.2%	1,733,946	2,348,573	8.5%	726,569	2,264,166	567,361	2,058,481	375,570	1,355,483	64,446
Quartile Share of Change						41.9%		32.7%		21.7%		3.7%
20 Installation, Maintenance, and Rej	4,597,635	4.1%	(50,818)	893,927	3.2%	(15,129)	1,232,044	(1,319)	1,542,164	68,553	929,500	(102,923)
Quartile Share of Change						29.8%		2.6%		-134.9%		202.5%
Production and Transportation		14.2%			18.7%							

21 Production Occupations	8,730,800	7.8%	(1,081,850)	2,732,573	9.9%	(196,245)	2,756,930	(224,992)	2,150,428	(304,440)	1,090,869	(356,173)
Quartile Share of Change						18.1%		20.8%		28.1%		32.9%
22 Transportation and Material Movir	7,059,826	6.3%	686,201	2,422,819	8.8%	358,812	2,201,820	281,488	1,651,362	115,444	783,825	(69,543)
Quartile Share of Change						52.3%		41.0%		16.8%		-10.1%

Table 10: Employment Change in Industry Sector by Earnings Quartile: Separately for Males and Females																
(Full Time Employed)																
	Total Males	Earnings Quartile 1					Earnings Quartile 2			Earnings Quartile 3			Earnings Quartile 4			
Panel: MALES	Change	% of	Change		% of	Change		Change		Change		Change		Change		
Industry	2006	2000-2006	All Jobs	2006	2000-2006	Share	All Jobs	2006	2000-2006	Share	2006	2000-2006	Share	2006	2000-2006	Share
Total	64,025,096	4,945,058		11,181,826	1,236,667	25.0%		14,617,717	998,244	20.2%	17,889,679	1,444,589	29.2%	20,335,874	1,265,558	25.6%
5 Manufacturing	10,898,334	(916,930)	17.0%	1,428,656	16,510	-1.8%	12.8%	2,508,504	(224,651)	24.5%	3,364,657	(286,946)	31.3%	3,596,517	(421,843)	46.0%
4 Construction	8,808,542	1,775,864	13.8%	1,823,237	462,801	26.1%	16.3%	2,443,553	568,113	32.0%	2,521,211	478,866	27.0%	2,020,541	266,084	15.0%
11 Professional, Scientific, Manag	6,877,691	1,133,235	10.7%	1,091,460	174,214	15.4%	9.8%	1,197,069	179,763	15.9%	1,538,637	237,243	20.9%	3,050,525	542,015	47.8%
7 Retail Trade	6,353,321	472,698	9.9%	1,563,181	171,530	36.3%	14.0%	1,831,962	137,868	29.2%	1,704,024	176,621	37.4%	1,254,154	(13,321)	-2.8%
12 Educational, Health and Social	5,972,097	647,369	9.3%	674,284	28,820	4.5%	6.0%	1,144,721	90,531	14.0%	1,747,276	269,588	41.6%	2,405,816	258,430	39.9%
10 Finance, Insurance, Real Estat	3,940,406	633,587	6.2%	387,942	40,993	6.5%	3.5%	649,890	73,450	11.6%	956,086	129,810	20.5%	1,946,488	389,334	61.4%
8 Transportation and Warehousing	3,909,800	235,332	6.1%	593,717	68,829	29.2%	5.3%	910,408	71,940	30.6%	1,412,281	109,615	46.6%	993,394	(15,052)	-6.4%
13 Arts, Entertainment, Recreation	3,694,562	465,894	5.8%	1,423,192	194,973	41.8%	12.7%	1,084,582	126,703	27.2%	736,390	107,461	23.1%	450,398	36,757	7.9%
15 Public Administration	3,477,901	293,915	5.4%	210,579	19,079	6.5%	1.9%	550,115	6,828	2.3%	1,169,307	120,050	40.8%	1,547,900	147,958	50.3%
6 Wholesale	3,146,851	172,928	4.9%	444,473	11,356	6.6%	4.0%	767,689	(6,206)	-3.6%	967,221	65,443	37.8%	967,468	102,335	59.2%
14 Other Services	2,613,073	29,538	4.1%	697,213	20,354	68.9%	6.2%	733,924	(14,527)	-49.2%	727,932	32,937	111.5%	454,004	(9,226)	-31.2%
9 Information and Communications	1,709,720	(181,355)	2.7%	141,086	(32,523)	17.9%	1.3%	257,989	(59,892)	33.0%	453,651	(45,464)	25.1%	856,994	(43,476)	24.0%
1 Agriculture, Forestry, Fishing and	1,266,087	109,712	2.0%	598,338	47,605	43.4%	5.4%	326,673	38,392	35.0%	188,030	11,623	10.6%	153,046	12,092	11.0%
3 Utilities	855,204	(21,083)	1.3%	44,432	(2,593)	12.3%	0.4%	107,263	(9,707)	46.0%	234,430	(1,240)	5.9%	469,079	(7,543)	35.8%
2 Mining	501,507	94,354	0.8%	60,036	14,719	15.6%	0.5%	103,375	19,639	20.8%	168,546	38,982	41.3%	169,550	21,014	22.3%

Panel: FEMALES	Total Females			Quartile 1		Earnings Quartile 2			Earnings Quartile 3			Earnings Quartile 4			Share	
	2006	Change	% of	2006	Change	Share	% of	2006	Change	Share	2006	Change	Share	2006		Change
Industry	2006	2000-2006	All Jobs	2006	2000-2006	Share	All Jobs	2006	2000-2006	Share	2006	2000-2006	Share	2006	2000-2006	Share
Total	46,084,386	3,063,629		10,634,771	107,692	3.5%		12,725,068	(16,842)	-0.5%	12,886,425	1,293,813	42.2%	9,838,122	1,678,966	54.8%
12 Educational, Health and Social	15,611,351	2,039,398	33.9%	3,041,840	156,680	7.7%	28.6%	4,082,903	388,490	19.0%	4,651,061	760,451	37.3%	3,835,547	733,777	36.0%
7 Retail Trade	4,734,999	259,806	10.3%	1,773,782	28,340	10.9%	16.7%	1,587,333	88,375	34.0%	918,094	120,128	46.2%	455,790	22,963	8.8%
13 Arts, Entertainment, Recreation	3,162,393	431,865	6.9%	1,604,455	221,707	51.3%	15.1%	874,421	98,274	22.8%	469,182	81,954	19.0%	214,335	29,930	6.9%
5 Manufacturing	4,306,452	(746,278)	9.3%	1,008,547	(257,001)	34.4%	9.5%	1,350,838	(369,096)	49.5%	1,124,629	(142,172)	19.1%	822,438	21,991	-2.9%
11 Professional, Scientific, Manag	4,374,498	445,639	9.5%	783,871	30,113	6.8%	7.4%	1,041,645	(1,270)	-0.3%	1,292,061	137,087	30.8%	1,256,921	279,709	62.8%
14 Other Services	1,947,067	153,994	4.2%	772,376	58,241	37.8%	7.3%	581,157	30,263	19.7%	395,579	41,833	27.2%	197,955	23,657	15.4%
10 Finance, Insurance, Real Estat	4,590,644	383,732	10.0%	566,950	(57,182)	-14.9%	5.3%	1,304,286	(68,787)	-17.9%	1,523,739	207,645	54.1%	1,195,669	302,056	78.7%
6 Wholesale	1,170,798	37,394	2.5%	224,181	(22,260)	-59.5%	2.1%	362,352	(26,009)	-69.6%	340,407	29,363	78.5%	243,858	56,300	150.6%
15 Public Administration	2,600,381	176,635	5.6%	217,620	(28,029)	-15.9%	2.0%	625,029	(75,425)	-42.7%	975,299	90,725	51.4%	782,433	189,364	107.2%
8 Transportation and Warehousing	1,126,304	28,248	2.4%	196,727	(4,536)	-16.1%	1.8%	306,133	2,997	10.6%	438,724	21,641	76.6%	184,720	8,146	28.8%
9 Information and Communications	1,179,530	(269,049)	2.6%	147,984	(42,167)	15.7%	1.4%	266,956	(85,188)	31.7%	376,853	(101,021)	37.5%	387,737	(40,673)	15.1%
4 Construction	742,837	96,255	1.6%	136,761	4,601	4.8%	1.3%	227,730	7,757	8.1%	240,251	47,458	49.3%	138,095	36,439	37.9%
1 Agriculture, Forestry, Fishing and	241,912	33,384	0.5%	133,758	21,689	65.0%	1.3%	54,470	3,723	11.2%	31,436	3,281	9.8%	22,248	4,691	14.1%
3 Utilities	229,785	(13,392)	0.5%	16,630	(4,646)	34.7%	0.2%	43,807	(10,778)	80.5%	89,002	(3,461)	25.8%	80,346	5,493	-41.0%
2 Mining	65,435	5,998	0.1%	9,289	2,142	35.7%	0.1%	16,008	(168)	-2.8%	20,108	(1,099)	-18.3%	20,030	5,123	85.4%

Table 11: Employment Change in Occupational Category by Earnings Quartile: Separately for Males and Females (Full Time Workers Only)

Panel MALES	Total MALE			Quartile 1			Quartile 2			Quartile 3			Quartile 4						
	2006	Change 2000-2006	% of all occps 2006	2006	Change 2000-2006	% of all 2006	Share	2006	Change 2000-2006	% of all occps 2006	Share	2006	Change 2000-2006	% of Occup 2006	Share	2006	Change 2000-2006	% of Occups 2006	Share
Total	64,025,114	4,945,076		11,181,831	1,236,672		25.0%	14,617,721	998,248		20.2%	17,889,683	1,444,593		29.2%	20,335,879	1,265,563		25.6%
Management, Business and Finance	8,788,410	684,625	13.7%	717,739	(18,149)	6.4%		1,042,029	3,412	7.1%		2,113,671	208,648	0.3%		4,914,971	490,714	0.8%	
1 Management	7,672,330	696,988	12.0%	655,756	(8,474)	5.9%	-1.2%	895,006	22,101	6.1%	3.2%	1,767,326	205,062	0.3%	29.4%	4,354,242	478,299	0.7%	68.6%
2 Business Operations Specialists	1,116,080	(12,363)	1.7%	61,983	(9,675)	0.6%	-78.3%	147,023	(18,689)	1.0%	-151.2%	346,345	3,586	0.0%	29.0%	560,729	12,415	0.0%	100.4%
Professional and Related	10,569,132	299,480	16.5%	127,320	(19,123)	1.1%		1,190,388	(61,372)	8.1%		2,882,785	188,267	13.0%		5,855,870	528,390	41.8%	
3 Financial Specialists	1,364,408	174,583	2.1%	61,661	(7,211)	0.6%	-4.1%	136,750	(845)	0.9%	-0.5%	370,189	25,475	1.8%	14.6%	795,808	157,164	12.4%	90.0%
4 Computer and Mathematical	2,177,481	124,897	3.4%	65,659	(11,912)	0.6%	-9.5%	140,883	(27,056)	1.0%	-21.7%	492,506	2,890	0.2%	2.3%	1,478,433	160,975	12.7%	128.9%
5 Architecture and Engineering	2,203,308	13,846	3.4%	74,082	(6,556)	0.7%	-47.3%	163,259	(31,078)	1.1%	-224.5%	556,827	(21,577)	-1.5%	-155.8%	1,409,140	73,057	5.8%	527.6%
6 Life, Physical and Social Sciences	651,602	11,485	1.0%	35,225	(10,908)	0.3%	-95.0%	73,360	(10,905)	0.5%	-94.9%	187,494	6,517	0.5%	56.7%	355,523	26,781	2.1%	233.2%
7 Community and Social Services	732,129	53,938	1.1%	113,714	(5,479)	1.0%	-10.2%	200,052	9,382	1.4%	17.4%	273,014	48,725	3.4%	90.3%	145,349	1,310	0.1%	2.4%
8 Legal	719,386	39,231	1.1%	26,062	(12,309)	0.2%	-31.4%	44,567	(4,348)	0.3%	-11.1%	107,815	(583)	0.0%	-1.5%	540,942	56,471	4.5%	143.9%
9 Education, Training, and Library	1,674,763	141,326	2.6%	131,330	2,883	1.2%	2.0%	233,441	5,651	1.6%	4.0%	576,487	102,727	7.1%	72.7%	733,505	30,065	2.4%	21.3%
10 Arts, Design, Entertainment, Sports and Recreation	1,046,055	31,522	1.6%	132,356	(12,965)	1.2%	-41.1%	198,076	(2,173)	1.4%	-6.9%	318,453	24,093	1.7%	76.4%	397,170	22,567	1.8%	71.6%
Service	8,853,793	1,372,305	13.8%	2,511,365	448,294	22.5%		2,337,374	374,696	16.0%		1,991,722	303,492	21.0%		2,013,332	245,823	19.4%	
11 Healthcare Practitioners and Technical Support	1,563,696	159,904	2.4%	79,080	(15,821)	0.7%	-9.9%	181,941	2,817	1.2%	1.8%	316,865	18,155	1.3%	11.4%	985,810	154,753	12.2%	96.8%
12 Healthcare Support	263,083	35,328	0.4%	76,657	8,335	0.7%	23.6%	96,128	14,833	0.7%	42.0%	65,258	12,495	0.9%	35.4%	25,040	(335)	0.0%	-0.9%
13 Protective Service	2,011,726	173,384	3.1%	244,138	6,252	2.2%	3.6%	449,109	27,393	3.1%	15.8%	660,939	77,553	5.4%	44.7%	657,540	62,186	4.9%	35.9%
14 Food Preparation and Serving	1,867,287	325,545	2.9%	943,386	162,045	8.4%	49.8%	584,770	111,141	4.0%	34.1%	259,838	52,548	3.6%	16.1%	79,293	(189)	0.0%	-0.1%
15 Building and Grounds Cleaning and Maintenance	2,522,547	559,465	3.9%	940,011	224,444	8.4%	40.1%	848,270	188,236	5.8%	33.6%	543,553	122,966	8.5%	22.0%	190,713	23,819	1.9%	4.3%
16 Personal Care and Service	625,454	118,679	1.0%	228,093	63,039	2.0%	53.1%	177,156	30,276	1.2%	25.5%	145,269	19,775	1.4%	16.7%	74,936	5,589	0.4%	4.7%
Sales and Office	10,873,969	876,191	17.0%	1,874,632	149,618	16.8%		2,676,046	130,551	18.3%		3,221,597	317,107	22.0%		3,101,694	278,915	22.0%	
17 Sales	6,714,757	692,160	10.5%	1,098,497	73,344	9.8%	10.6%	1,427,617	51,274	9.8%	7.4%	1,853,435	259,876	18.0%	37.5%	2,335,208	307,666	24.3%	44.5%
18 Office and Administrative Support	4,159,212	184,031	6.5%	776,135	76,274	6.9%	41.4%	1,248,429	79,277	8.5%	43.1%	1,368,162	57,231	4.0%	31.1%	766,486	(28,751)	-2.3%	-15.6%
Construction and Maintenance	12,715,059	1,566,970	19.9%	2,739,044	514,401	24.5%		2,417,397	588,189	16.5%		2,235,016	400,106	27.7%		1,503,972	129,412	10.2%	
19 Farming, Fishing, and Forestry	652,141	82,769	1.0%	364,628	48,779	3.3%	58.9%	180,352	28,799	1.2%	34.8%	71,729	5,251	0.4%	6.3%	35,432	(60)	0.0%	-0.1%
20 Construction Trades	7,571,661	1,549,339	11.8%	1,702,789	465,622	15.2%	30.1%	2,237,045	559,390	15.3%	36.1%	2,163,287	394,855	27.3%	25.5%	1,468,540	129,472	10.2%	8.4%
21 Extraction Workers	150,370	36,927	0.2%	25,655	6,967	0.2%	18.9%	41,597	11,663	0.3%	31.6%	53,372	14,831	1.0%	40.2%	29,746	3,466	0.3%	9.4%
22 Installation, Maintenance, and Repairs	4,340,887	(102,065)	6.8%	645,972	(28,674)	5.8%	28.1%	1,086,376	(74,959)	7.4%	73.4%	1,591,150	62,394	4.3%	-61.1%	1,017,389	(60,826)	-4.8%	59.6%
Production and Transportation	12,224,751	(145,843)	19.1%	2,698,962	228,672	24.1%		3,826,514	26,068	26.2%		3,800,370	(50,252)	-3.5%		1,898,905	(350,331)	-27.7%	
23 Production	6,174,578	(660,175)	9.6%	1,172,078	13,997	10.5%	-2.1%	1,882,114	(154,285)	12.9%	23.4%	2,043,424	(220,751)	-15.3%	33.4%	1,076,962	(299,136)	-23.6%	45.3%
24 Transportation and Material Moving	6,050,173	514,332	9.4%	1,526,884	214,675	13.7%	41.7%	1,944,400	180,353	13.3%	35.1%	1,756,946	170,499	11.8%	33.1%	821,943	(51,195)	-4.0%	-10.0%

Panel FEMALES	Total FEMALE			Quartile 1			Quartile 2			Quartile 3			Quartile 4						
	2006	Change 2000-2006	% of All Occups	2006	Change 2000-2006	% of All Occups	Share	2006	Change 2000-2006	% of All Occups	Share	2006	Change 2000-2006	% of All Occups	Share	2006	Change 2000-2006	% of All Occups	Share
Total	46,084,393	3,063,636		10,634,774	107,695		3.5%	12,725,071	(16,839)		-0.5%	12,886,426	1,293,814		42.2%	9,838,122	1,678,966		54.8%
Management, Business and Finance	5,474,531	460,604	11.9%	464,362	(29,277)	4.4%		965,601	(116,144)	7.6%		1,821,932	144,332	11.2%		2,222,636	461,693	27.5%	
1 Management	4,228,346	480,218	9.2%	395,391	(5,253)	3.7%	-1.1%	714,658	(49,757)	5.6%	-10.4%	1,315,889	132,026	10.2%	27.5%	1,802,408	403,202	24.0%	84.0%
2 Business Operations Specialists	1,246,185	(19,614)	2.7%	68,971	(24,024)	0.6%	-122.5%	250,943	(66,387)	2.0%	-338.5%	506,043	12,306	1.0%	62.7%	420,228	58,491	3.5%	298.2%
Professional and Related	9,792,636	897,779	21.2%	1,083,536	(8,992)	10.2%		1,849,287	(31,651)	14.5%		3,438,854	423,011	32.7%		3,420,959	515,411	30.7%	
3 Financial Specialists	1,479,134	192,460	3.2%	81,178	(15,983)	0.8%	-8.3%	272,411	(39,583)	2.1%	-20.6%	605,708	87,337	6.8%	45.4%	519,837	160,689	9.6%	83.5%
4 Computer and Mathematical	799,693	(38,246)	1.7%	28,402	(2,128)	0.3%		67,912	(24,719)	0.5%		232,403	(35,633)	-2.8%		470,976	24,234	1.4%	
5 Architecture and Engineering	328,504	22,517	0.7%	17,366	(2,743)	0.2%	-12.2%	43,619	(9,356)	0.3%	-41.6%	104,461	(4,506)	-0.3%	-20.0%	163,058	39,122	2.3%	173.7%
6 Life, Physical and Social Science	456,142	69,921	1.0%	32,664	(2,560)	0.3%	-3.7%	64,024	(8,530)	0.5%	-12.2%	157,387	25,360	2.0%	36.3%	202,067	55,651	3.3%	79.6%
7 Community and Social Services	1,052,793	132,275	2.3%	110,915	921	1.0%	0.7%	315,087	25,518	2.5%	19.3%	420,226	72,851	5.6%	55.1%	206,565	32,985	2.0%	24.9%
8 Legal	671,858	108,317	1.5%	34,888	(4,150)	0.3%	-3.8%	109,188	(4,699)	0.9%	-4.3%	221,996	37,580	2.9%	34.7%	305,786	79,586	4.7%	73.5%
9 Education, Training, and Library	4,225,799	393,343	9.2%	649,761	30,332	6.1%	7.7%	807,271	46,819	6.3%	11.9%	1,442,680	217,286	16.8%	55.2%	1,326,087	98,906	5.9%	25.1%
10 Arts, Design, Entertainment, Sports and Recreation	778,713	17,192	1.7%	128,362	(12,681)	1.2%	-73.8%	169,775	(17,101)	1.3%	-99.5%	253,993	22,736	1.8%	132.2%	226,583	24,238	1.4%	141.0%
Service	11,005,145	1,786,524	23.9%	3,930,361	539,318	37.0%		2,883,083	472,983	22.7%		2,213,003	287,832	22.2%		1,978,698	486,391	29.0%	
11 Healthcare Practitioners and Related	3,747,789	544,045	8.1%	274,406	4,807	2.6%	0.9%	626,609	17,664	4.9%	3.2%	1,230,437	76,541	5.9%	14.1%	1,616,337	445,033	26.5%	81.8%
12 Healthcare Support	1,772,937	255,508	3.8%	637,202	27,397	6.0%	10.7%	734,597	144,032	5.8%	56.4%	324,316	80,175	6.2%	31.4%	76,822	3,904	0.2%	1.5%
13 Protective Service	503,854	106,571	1.1%	99,069	17,516	0.9%	16.4%	139,403	24,503	1.1%	23.0%	148,808	32,485	2.5%	30.5%	116,574	32,067	1.9%	30.1%
14 Food Preparation and Serving	1,870,579	246,976	4.1%	1,164,308	154,107	10.9%	62.4%	506,762	73,091	4.0%	29.6%	155,001	23,703	1.8%	9.6%	44,508	(3,925)	-0.2%	-1.6%
15 Building and Grounds Cleaning	1,183,762	244,318	2.6%	695,098	134,890	6.5%	55.2%	348,333	85,902	2.7%	35.2%	107,411	22,138	1.7%	9.1%	32,920	1,388	0.1%	0.6%
16 Personal Care and Service	1,926,224	389,106	4.2%	1,060,278	200,601	10.0%	51.6%	527,379	127,791	4.1%	32.8%	247,030	52,790	4.1%	13.6%	91,537	7,924	0.5%	2.0%
Sales and Office	15,909,020	324,801	34.5%	3,636,331	(241,751)	34.2%		5,664,729	(180,523)	44.5%		4,707,975	502,829	38.9%		1,899,985	244,246	14.5%	
17 Sales	4,763,725	469,474	10.3%	1,576,050	55,065	14.8%	11.7%	1,279,981	44,907	10.1%	9.6%	1,064,740	190,748	14.7%	40.6%	842,954	178,754	10.6%	38.1%
18 Office and Administrative Support	11,145,295	(144,673)	24.2%	2,060,281	(296,816)	19.4%	-205.2%	4,384,748	(225,430)	34.5%	-155.8%	3,643,235	312,081	24.1%	215.7%	1,057,031	65,492	3.9%	45.3%
Construction and Maintenance	541,381	52,296	1.2%	191,552	22,339	1.8%		139,556	9,349	1.1%		124,582	12,643	1.0%		85,691	7,965	0.5%	
19 Farming, Fishing, and Forestry	138,947	15,456	0.3%	95,008	12,395	0.9%	80.2%	28,956	1,429	0.2%	9.2%	9,848	956	0.1%	6.2%	5,135	676	0.0%	4.4%
20 Construction Trades	204,319	47,399	0.4%	62,718	13,497	0.6%	28.5%	61,215	15,684	0.5%	33.1%	46,655	9,996	0.8%	21.1%	33,731	8,222	0.5%	17.3%
21 Extraction Workers	2,894	181	0.0%	709	(29)	0.0%	-16.0%	419	(233)	0.0%	-128.7%	1,273	471	0.0%	260.2%	493	(28)	0.0%	-15.5%
22 Installation, Maintenance, and Repairs	195,221	(10,740)	0.4%	33,117	(3,524)	0.3%	-32.8%	48,966	(7,531)	0.4%	-70.1%	66,806	1,220	0.1%	11.4%	46,332	(905)	-0.1%	-8.4%
Production and Transportation	3,361,680	(458,368)	7.3%	1,328,632	(173,942)	12.5%		1,222,815	(170,853)	9.6%		580,080	(76,833)	-5.9%		230,153	(36,740)	-2.2%	
23 Production	2,434,385	(546,557)	5.3%	944,513	(211,437)	8.9%	-38.7%	904,250	(207,694)	7.1%	-38.0%	417,804	(90,676)	-7.0%	-16.6%	167,818	(36,750)	-2.2%	-6.7%
24 Transportation and Material Moving	927,295	88,189	2.0%	384,119	37,495	3.6%	42.5%	318,565	36,841	2.5%	41.8%	162,276	13,843	1.1%	15.7%	62,335	10	0.0%	0.0%