

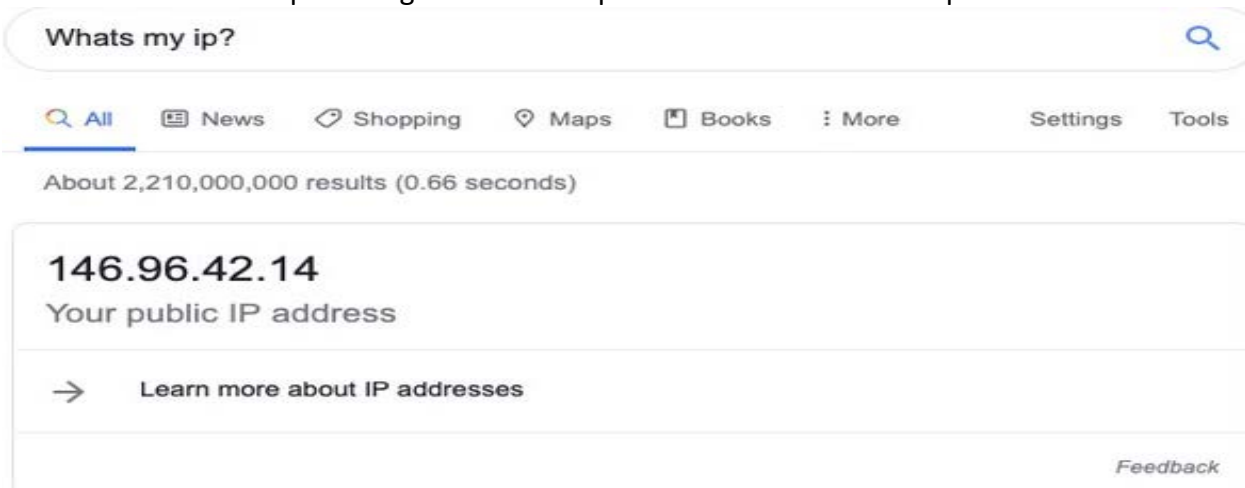
How to connect to your GC Mac desktop from home

Effective: March 17, 2020
Last Updated: March 17, 2020

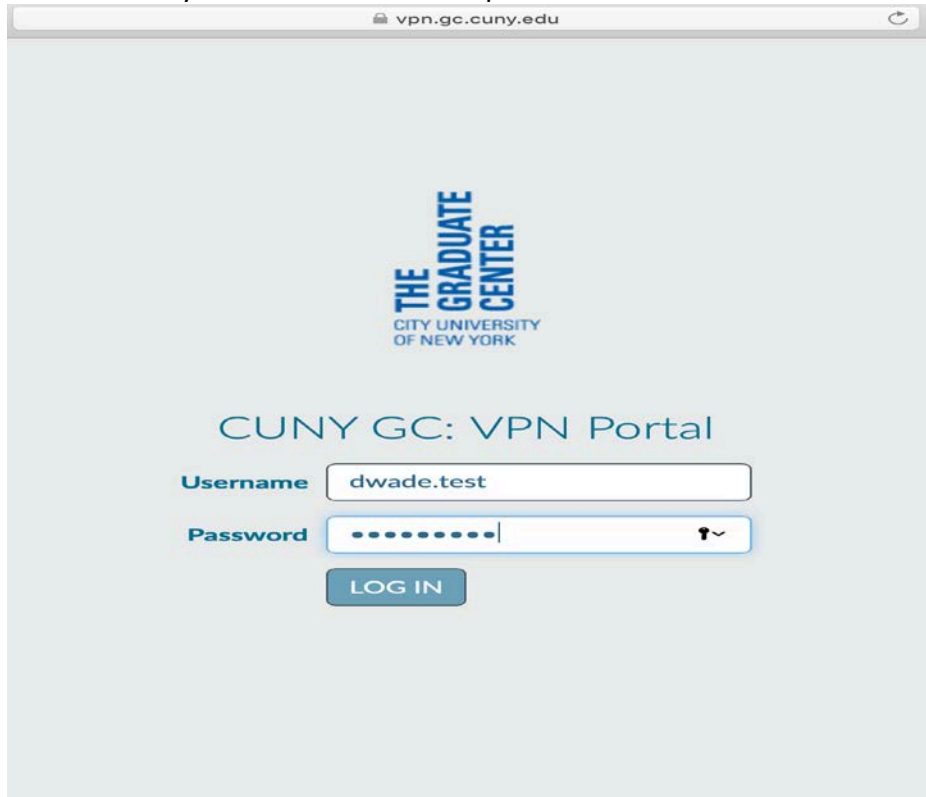
Before you log out of your GC Mac please open any web browser and type in search field **What's my ip?** You will need this information to connect to your Mac from home later on in the documentation



In the results window please right down Your public IP address see example below



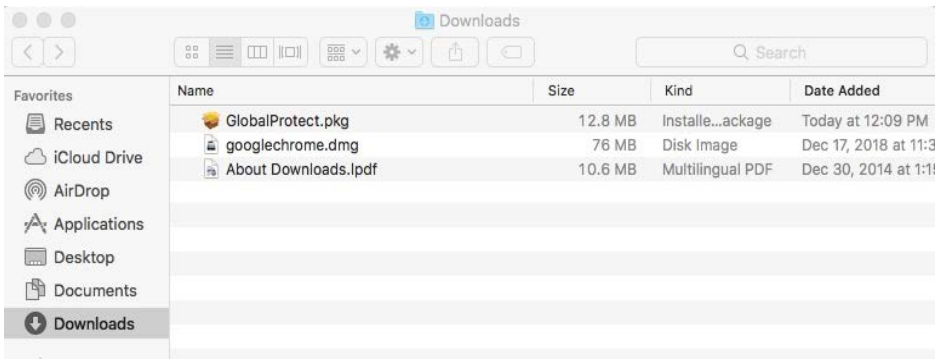
1. At home open any web browser and type <https://vpn.gc.cuny.edu>
2. Enter your GC username and password then click the LOG IN button see example below



3. Click on the Download Mac 32/64 bit GlobalProtect agent link as a default the download saves to the downloads folder



4. Open the downloads folder then doubleclick **GlobalProtect.pkg** file



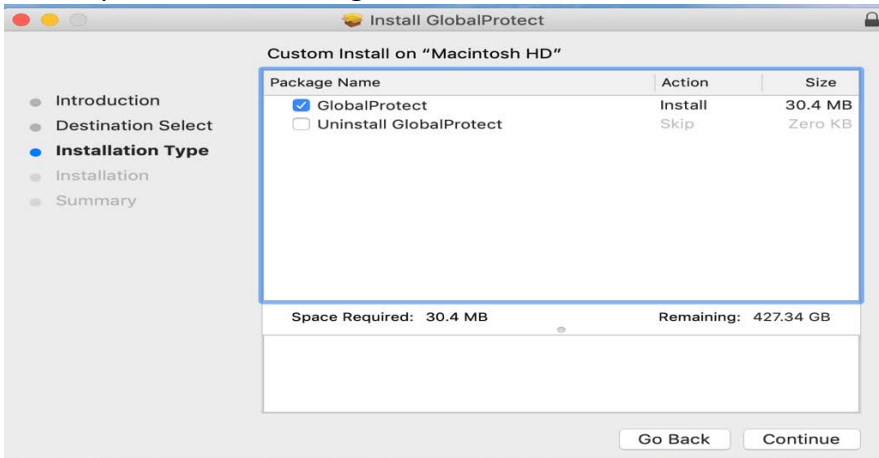
5. This starts the install process click the Continue button see example below



6. Keep the default destination settings click the Continue button



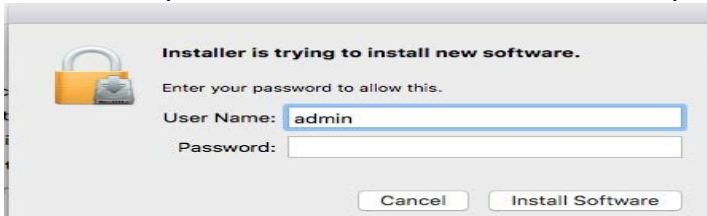
7. Keep the default settings then click the Continue button



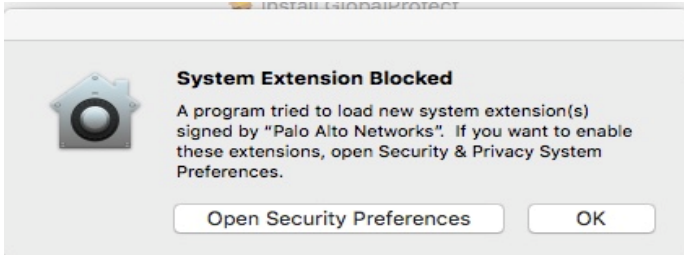
8. Keep the default settings then click the **Install button**



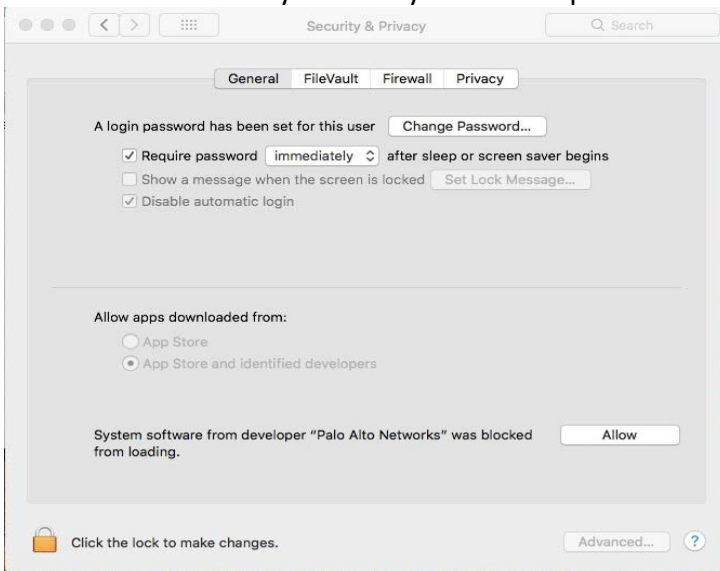
9. The installer needs your admin username and password to continue this is the same account you use at home to install software on your personal Mac see example below



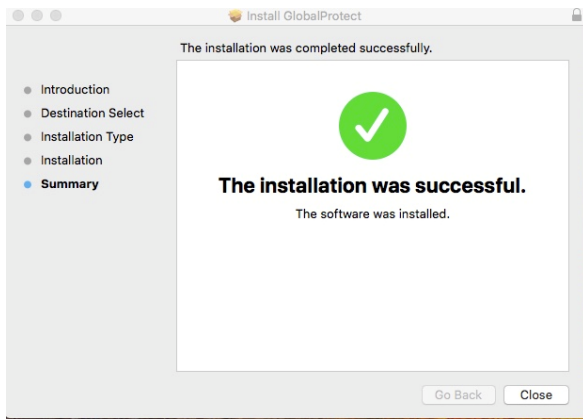
10. You will see the Apple Security prompts click the OK button to continue



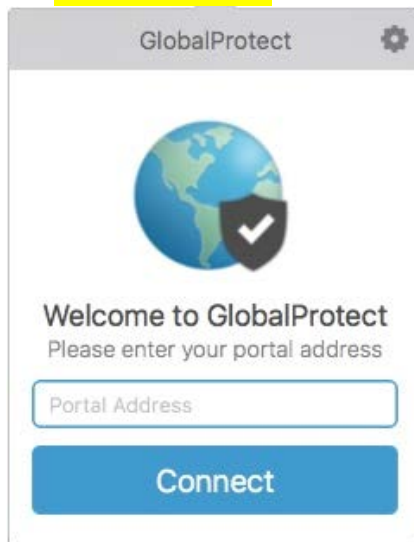
11. When the Security & Privacy windows open click the **Allow** button




12. The installation was successful click the Close button see example below



13. At the top of the Mac menu on right side look for a small gray globe click it and enter **128.228.93.84** in the box below then click the Connect button



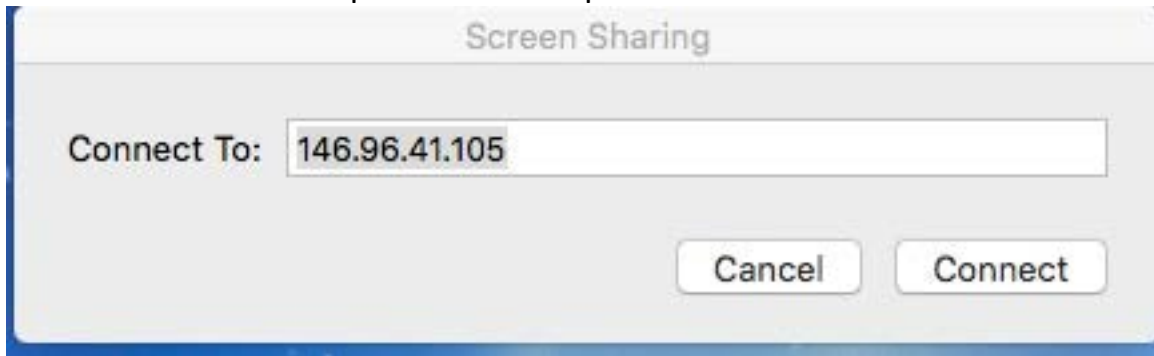
14. When prompted enter your Graduate center username and password

15. Look for the App Store icon in your dock if you don't see it click on the apple icon at the top of the Mac menu , System preferences, App Store



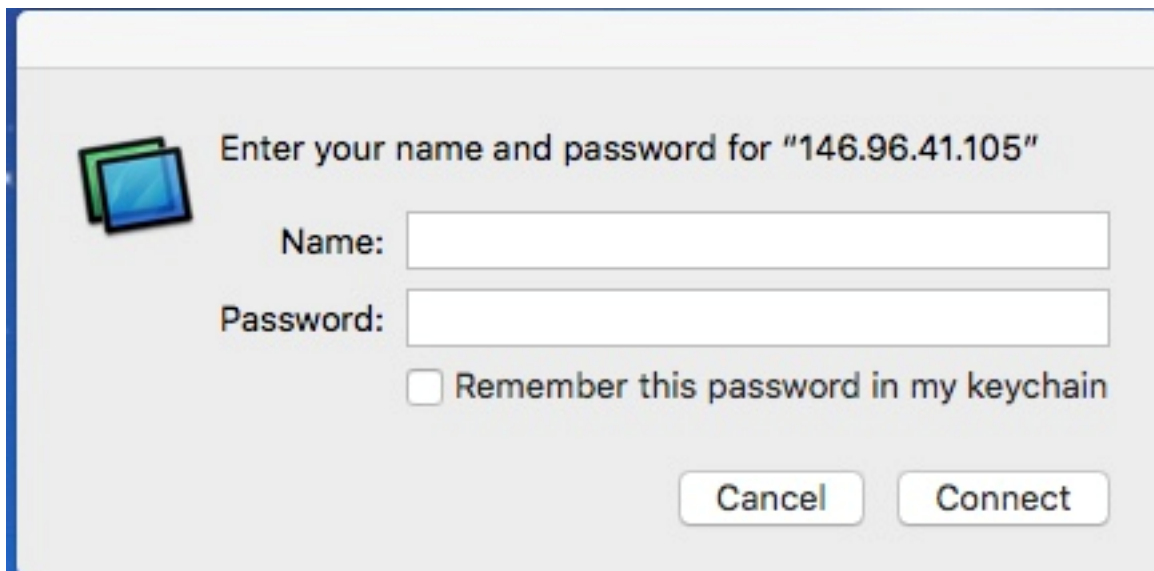
Connecting from home to your Mac at work

- Open the screen sharing app and type the ip address of your Graduate Center mac computer see example below

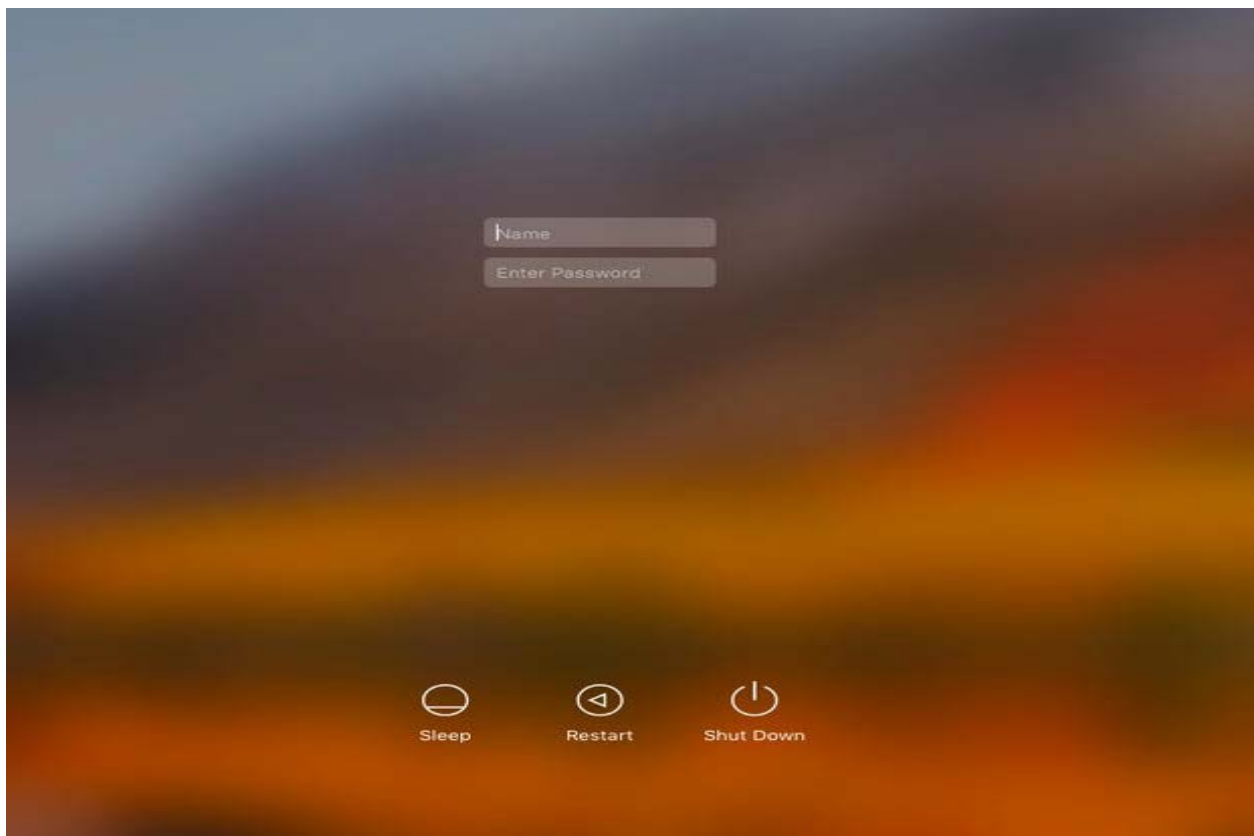


Click the Connect button to continue

Please enter you're the username and password that you use on your home Mac to install software then click he Connect button



Now you should see the screen of the Mac desktop from work please login with your Graduate Center credentials see example below



When you are done with your Mac at work remember to logoff and close the screen sharing window

Remoting from a Mac at home to your pc at work (This section is only for Mac uses who work on a PC at work)

1. In the App Store do search for **Microsoft Remote desktop**
To begin downloading Microsoft Remote Desktop, click the “Get” button. This app is free, so you will not see a price listed. Once you click on “Get,” the button will turn green and say “Install app” Click the button again. You will be prompted to enter your **Apple id and password before the install begins**



2. After install go to the Applications folder and double click the Microsoft Remote desktop app to open it to keep this app in the dock permanently right click on the Microsoft Remote Desktop icon on the dock and click on options and choose **keep in dock**



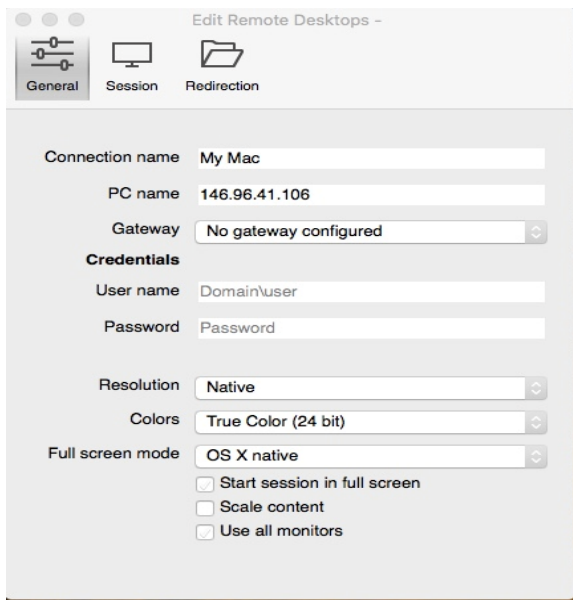
3. Now that the app is open click the + plus button then click on the General tab to enter the settings to connect to your GC Mac desktop

Connection name: My Work Mac (This can be named anything)

PC Name: 146.96.41.106 (This is info you collected on the first page of the instructions)

Username name: **GC\dwade (enter your GC username)**

Password: GC password



4. Highlight your connection then click on the Start tab to start connecting to your GC Mac once connected you will be prompted for your Graduate Center username and password if everything successful you should see your GC Mac and continue doing work as you have in the past

