

ASRC VPN Mac client Installation and Configuration Guide

Effective: May 20, 2021

Last Updated: May 20, 2021

1. At home open any web browser and type <https://rmasrc.gc.cuny.edu>
2. Enter your GC username and password then click the “LOG IN” button see example below.



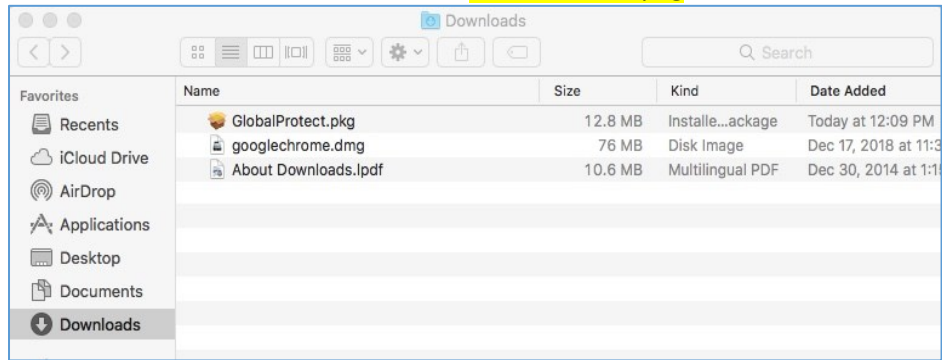
The screenshot shows the Palo Alto Networks GlobalProtect Portal login interface. At the top left is the Palo Alto Networks logo. Below it, the text "GlobalProtect Portal" is centered. There are two input fields: "Username" with the value "ttsoi" and "Password" with masked characters. A blue "LOG IN" button is positioned below the password field.

3. Click on the “Download Mac 32/64-bit GlobalProtect agent” link as a default the download saves to the downloads folder.

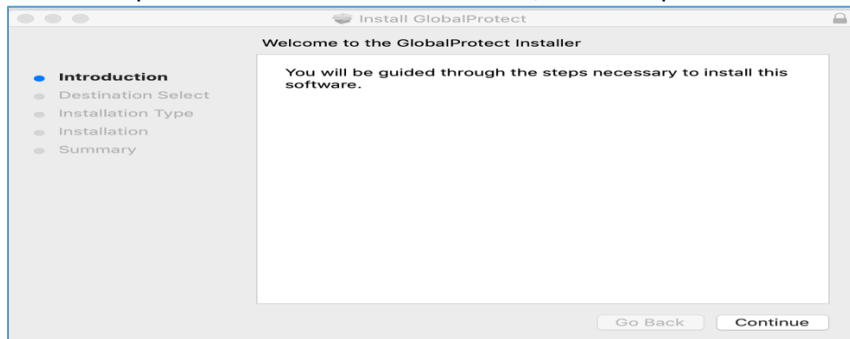


The screenshot shows the Palo Alto Networks GlobalProtect Portal download page. At the top left is the Palo Alto Networks logo. Below it, the text "GlobalProtect Portal" is centered. There are three download links: "Download Windows 32 bit GlobalProtect agent", "Download Windows 64 bit GlobalProtect agent", and "Download Mac 32/64 bit GlobalProtect agent". Below these links, there is explanatory text for each OS type: "Windows 32 bit OS needs to download and install Windows 32 bit GlobalProtect agent.", "Windows 64 bit OS needs to download and install Windows 64 bit GlobalProtect agent.", and "Mac OS needs to download and install Mac 32/64 bit GlobalProtect agent."

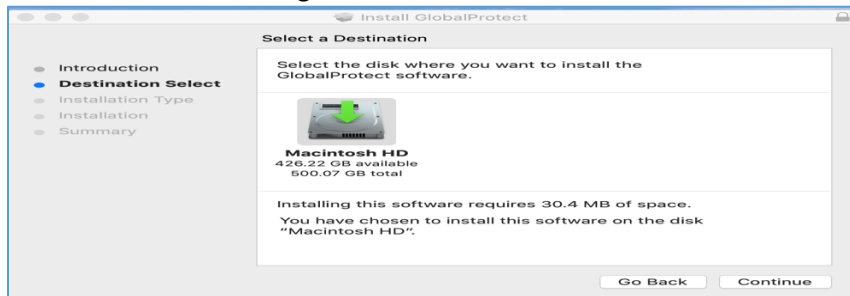
4. Open the downloads folder then double-click **GlobalProtect.pkg** file.



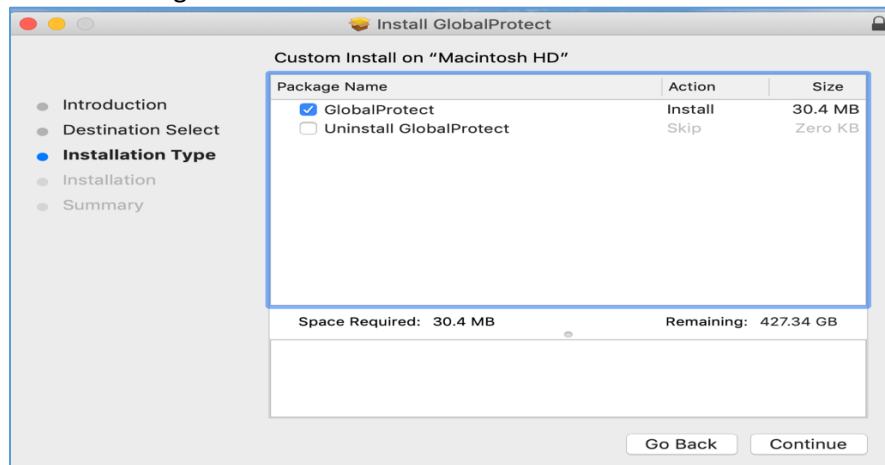
5. This starts the install process click the Continue button, see example below.



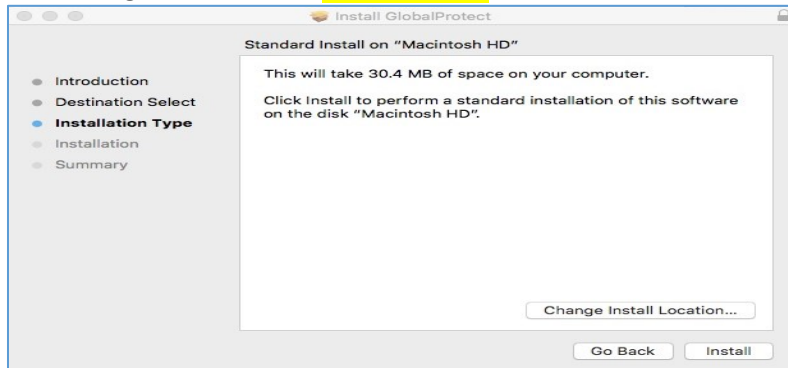
6. Keep the default destination settings. Click the Continue button.



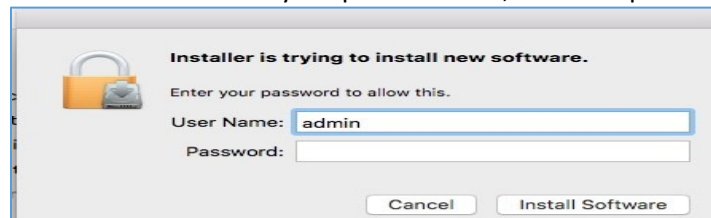
7. Keep the default settings then click the Continue button.



8. Keep the default settings then click the **Install button**.



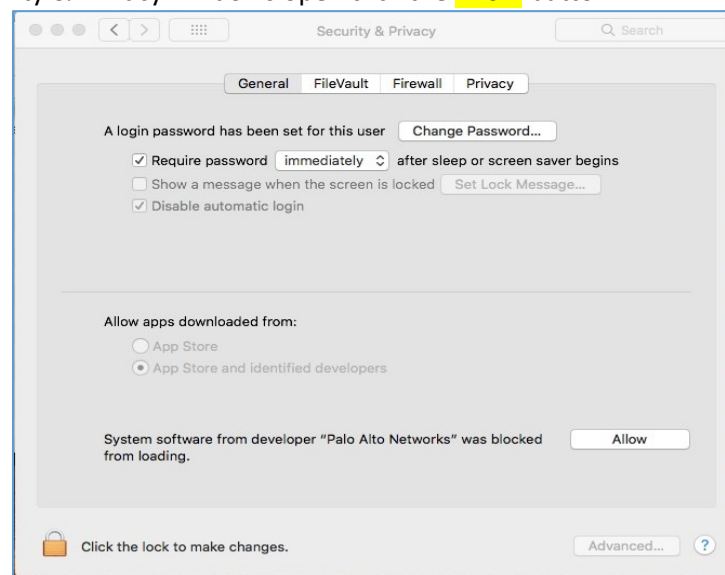
9. The installer needs your admin username and password to continue. This is the same account you use at home to install software on your personal Mac, see example below.



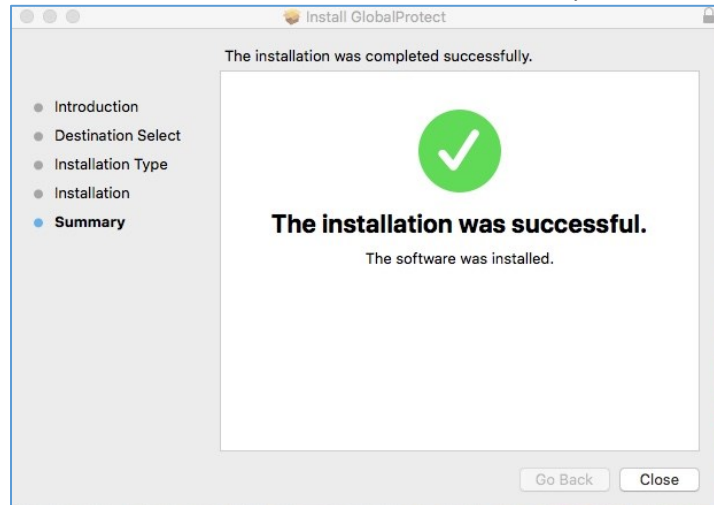
10. You will see the Apple Security prompts, Click "Open Security Preferences."



11. When the Security & Privacy windows open click the **Allow** button.

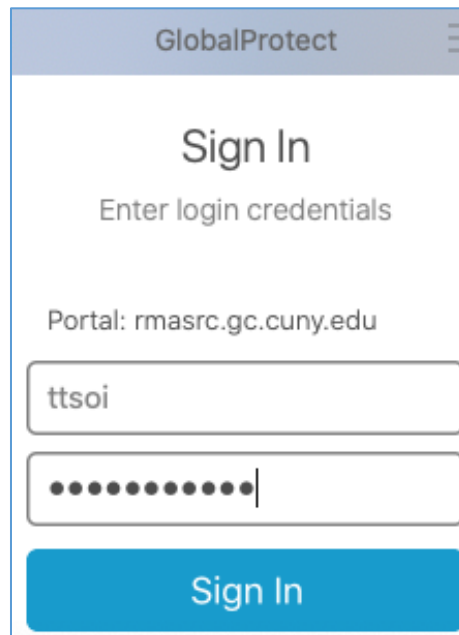


12. The installation was successful. Click the Close button see example below.



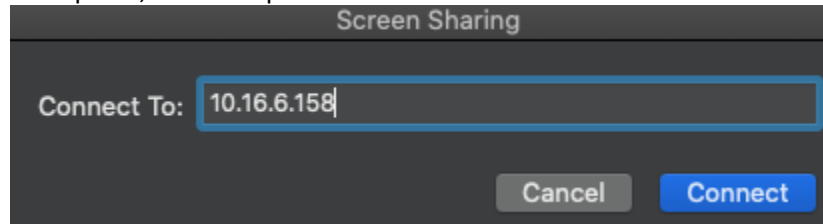
13. At the top of the Mac menu on right side look for a small gray globe click it and enter **rmasrc.gc.cuny.edu** in the box below, then click the Connect button.

14. When prompted enter your GC username and password (***without @gc.cuny.edu**).

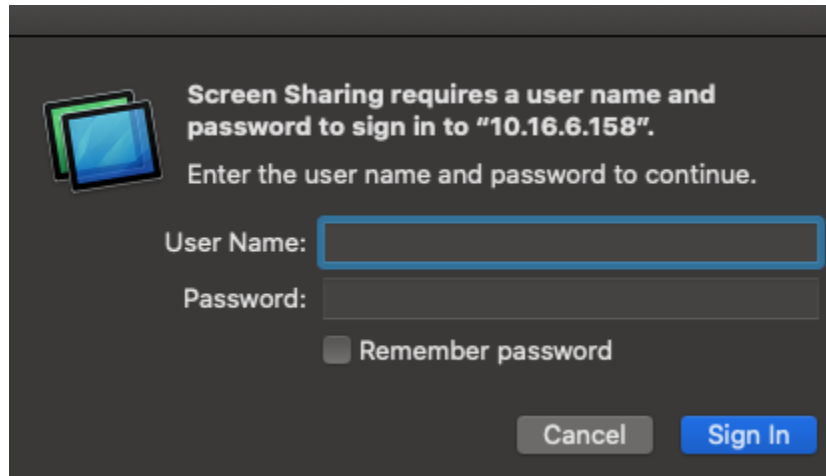


Connecting from home to your Mac at work

1. Open the screen sharing app you can search for it in spotlight and type the IP address of your ASRC Mac computer, see example below.



2. Click the Connect button to continue.




3. Please enter your username and password that you use on your home Mac to install software, then click the Connect button.
4. Now you should see the screen of the Mac desktop from work please login with your Graduate Center credentials see example below.



5. When you are done with your Mac at work remember to logoff and close the screen sharing window

Remoting from a Mac at home to your pc at work (This section is only for Mac users who work on a PC at work)

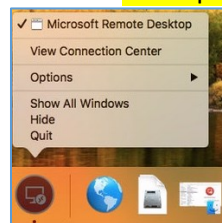
1. Look for the App Store icon in your dock if you do not see it click on the apple icon at the top of the Mac menu , System preferences, App Store.



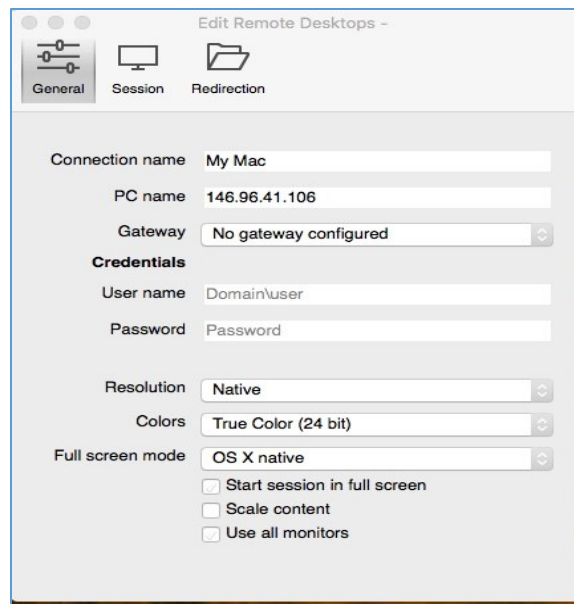
2. In the App Store do search for **Microsoft Remote desktop**.
 - a. To begin downloading Microsoft Remote Desktop, click the “Get” button. This app is free, so you will not see a price listed.
 - b. Once you click on “Get,” the button will turn green and show, “Install app.” Click the button again. You will be prompted to enter your **Apple ID and password before the install begins.**



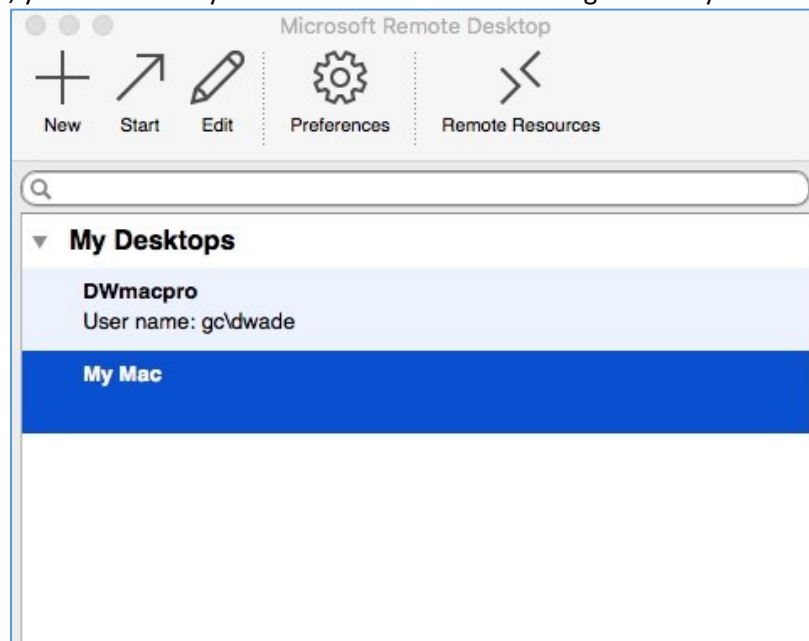
3. After install go to the Applications folder and double click the Microsoft Remote desktop app to open it. To keep this app in the dock permanently right click on the Microsoft Remote Desktop icon on the dock, click on options, and choose **to keep in dock.**



4. Now that the app is open click the plus (+) button then click on the General tab to enter the settings to connect to your GC Mac desktop.
 - Connection name: My Work Mac (This can be named anything)
 - PC Name: 10.16.x.x (This is the IP of your PC workstation)
 - Username name: **gc\ttsoi (enter your GC username)**
 - Password: GC password



5. Highlight your connection then click on the Start tab to start connecting to your GC Mac. Once connected you will be prompted for your Graduate Center username and password. If successful, you should see your GC Mac and continue doing work as you have in the past.



6. Remember to logout of your GC Mac when you are done working and close the Microsoft Remote Desktop app.